



Republic of the Philippines  
**Department of Education**

---

14 MAR 2014

DepEd O R D E R  
No. **15**, s. 2014

**FY 2014 GUIDELINES ON THE UTILIZATION OF FINANCIAL ASSISTANCE  
TO SCHOOLS IMPLEMENTING SPECIAL CURRICULAR PROGRAMS**

To: Undersecretaries  
Assistant Secretaries  
Bureau Directors  
Directors of Services, Centers and Heads of Units  
Regional Secretary, ARMM  
Regional Directors  
Schools Division Superintendents  
Heads, Public Elementary and Secondary Schools

1. The Department of Education (DepEd) issues the unified guidelines in line with the new national government policy to directly release funds to the recipient schools. This shall standardize the implementation process of the financial assistance to the following special curricular programs: Support to Special Elementary Science Schools (SESS), Support to Special Education (SPED) Centers/Schools, Support to Secondary Schools with Special Programs for the Arts and Sports (SPA/SPS), Support to Science, Technology and Engineering High Schools (formerly ESEP), and Financial Assistance to Regional Science High Schools (RSHS).

2. The basic features and rules in the utilization of funds for each program are presented in Enclosure No. 1. It specifically provides guidance on allocation and eligible activities and expenditure items. It also includes the work plan and accomplishment templates to facilitate progress monitoring and program evaluation. It is imperative therefore to strictly follow the basic rules to avoid disallowance and other implementation issues.

3. The funds of the six special programs are already lodged at the Regional Offices (ROs) as part of the Comprehensive Release of Allotment. This is in line with the new policy on General Appropriations Act as the release document. To facilitate judicious and smooth implementation of the said programs, roles and responsibilities of each level of governance, the monitoring and evaluation mechanism and the specific timelines are hereby specified:

### 3.1 Planning Phase

3.1.1 Upon the issuance of these guidelines, the Regional Office (RO) shall communicate to the School Division Offices (SDOs) concerned, the availability of funds and the need to prepare the Work and Financial Plan per funding source. The SDO immediately issues call for the submission of individual work and financial plan of the recipient schools.

3.1.2 Using the template in Enclosure No. 2.a, the schools shall prepare the Work and Financial Plan specific to the fund support and shall submit to the SDO for appraisal. Projects and activities which are chargeable to the fund may be culled out from the approved Annual Implementation Plan (AIP) of the schools. To aid in the appraisal, the SDO shall require the schools to use the template in Enclosure No. 2.b which contains the Physical and Financial Accomplishment Reports on previous funds received, including the amount liquidated. This Report shall also be submitted to the SDO.

3.1.3 Once appraised, the SDO shall communicate to the school any feedback or needed clarification; in turn, the school shall provide explanation or justification as applicable, and shall revise the workplan based on agreement. Once the workplan is accepted, the SDO shall consolidate and submit to the RO-Planning and Policy Research Division (RO-PPRD) the Physical Plan using Enclosure No. 2.c. The SDO shall subsequently revise the Monthly Disbursement Program (MDP) using the Financial Plan format in Enclosure No. 2.d and submit the same to the RO-Finance Division.

3.1.4 The RO-PPRD, in coordination with the Regional Supervisor in charge of the Program, shall review the submitted Physical and Financial Plan for alignment to DepEd's directions and shall endorse the list of recipient schools to the RO-Finance Division for release of funds.

### 3.2 Release of Funds

3.2.1 To effect the revision in cash programming, the RO-Finance Division shall submit a revised MDP to the concerned DBM-RO. To fasttrack release of funds, the RO-Finance Division may simultaneously effect the transfer of the allotment to the respective units through issuance of Sub-Allotment Order (Sub-ARO) as follows:

- a. SDOs for Non-Implementing Units (Non-IUs); and
- b. Implementing Units (IUs)

3.2.2 Upon receipt of the Sub-ARO, the SDOs and/or the IUs shall record such receipt and obligation of allotment in the Registry of Allotments and Obligations for MOOE (RAOMO) being maintained by the respective units. The SDOs and/or IUs shall request release of Notice of Cash Allotment (NCA) from DBM, supported by copies of Sub-AROs corresponding to the amount as reflected in these guidelines.

3.2.3 Upon receipt of the NCA, the SDOs shall effect the transfer of the allocated amount to the heads of the Non-IUs in the form of cash advance. The cash advance shall specify the name of the school to which the subsidy is allocated and the purposes for which the subsidy is to be applied.

3.2.4 For Non-IUs with large allocation, the SDOs may release the cash advance in tranches depending on the timelines in the approved work plan. Subsequent cash advance(s) may be given, provided that at least 75% of the previous cash advances have been liquidated. No succeeding releases shall be made unless previous cash advances have been fully liquidated and accounted for.

3.2.5 In cases where school heads could not draw cash advance due to legal and administrative impediments, the concerned Schools Division Superintendent shall take immediate appropriate action to ensure that such schools will not be deprived of the subsidy.

3.2.6 For IUs, the funds shall be disbursed in accordance with the schedule as indicated in the approved Work and Financial Plan.

3.2.7 All funds received shall be utilized according to the eligible activities specified in Enclosure No. 1.

### 3.3 Liquidation Process

3.3.1 Every 10th day of the month, after the conduct of an activity, the Non-IUs shall submit their utilization and/or liquidation reports to their respective SDOs using disbursement report form for proper reporting, monitoring and consolidation.

3.3.2 The supporting documents needed for liquidation are the following:

- a. Official Receipts/Cash Invoice;
- b. Reimbursement Expense Receipts (RERs);
- c. Petty Cash Register (PCR);
- d. Other supporting documents to vouch for related transactions.

3.3.3 Supporting documents of IUs regarding the utilization and/or liquidation reports shall be retained in their respective schools. However, a report copy must be submitted to the SDO. All supporting documents of Non-IUs shall be retained in their respective SDOs.

### 3.4 Progress Monitoring and Reporting

3.4.1 The recipient schools shall submit quarterly, a Physical and Financial Accomplishment Report to the SDO using the format in Enclosure No. 2.e, every 3rd day of the first month of the succeeding quarter (April, July, October, January of the succeeding year).

3.4.2 The SDO shall review the reports and the supporting documents received from the recipient schools to ascertain their eligibility to the guidelines and shall provide the necessary technical assistance. It shall then prepare a consolidated Physical and Financial Accomplishments Report (for IUs and Non-IUs) using the format in Enclosure No. 2.f and shall submit this to their respective Regional Offices, quarterly every 5th day of the first month of the succeeding quarter (April, July, October, January of the succeeding year).

3.4.3 The RO shall submit quarterly to the Central Office a consolidated Physical and Financial Accomplishment Report using the format in Enclosure No. 2.g, on every 7th day of the first month of the succeeding quarter (April, July, October, January of the succeeding year).

- 3.5 The detailed process flow of implementation is reflected in Enclosure No. 2. Instructions on filling up the required templates are provided in the respective enclosures.
4. The list of recipient schools with the corresponding allocation per school is provided in Enclosure No. 3.
5. All existing Orders and Memoranda inconsistent with this Order are rescinded. These guidelines shall remain in effect, unless sooner repealed, amended, or rescinded.
6. For more information and inquiries, all concerned may contact the **Director IV, Bureau of Elementary Education (BEE)**, 2nd Floor Bonifacio Building, DepEd Complex, Meralco Avenue, Pasig City at telephone no.: (02) 637-4346; and the **Director IV, Bureau of Secondary Education (BSE)**, 3rd Floor Bonifacio Building, DepEd Complex, Meralco Avenue, Pasig City at telephone no.: (02) 633-7242.
7. Immediate dissemination of and strict compliance with this Order is directed.



**BR. ARMIN A. LUISTRO FSC**  
Secretary

Encls.:  
As stated

Reference:  
DepEd Order: Nos. 35, 38, 39, 41 and 47, s. 2013

To be indicated in the Perpetual Index  
under the following subjects:

ALLOCATION  
EXPENSES  
FUNDS  
POLICY  
PROGRAMS  
PROJECTS  
SCHOOLS  
SCIENCE EDUCATION

**BASIC FEATURES AND RULES IN UTILIZATION OF FINANCIAL ASSISTANCE TO SCHOOLS IMPLEMENTING SPECIAL CURRICULAR PROGRAMS**

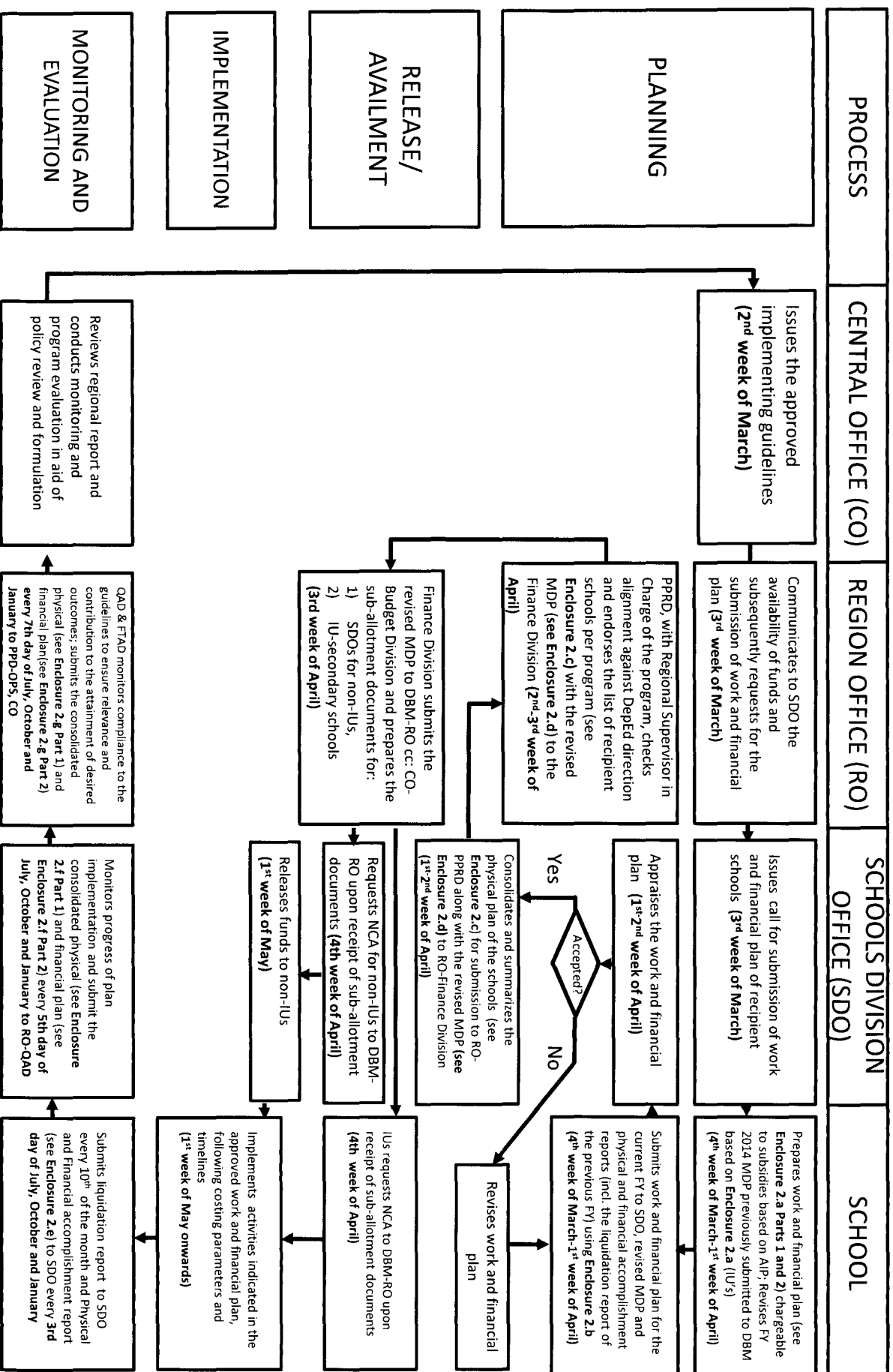
The following table provides specific guidelines on the management and utilization of financial support to schools with special curricular programs. Focal office in the regions must ensure strict adherence to the basic rules in this guidelines.

<b>Brief Description</b>	<b>Recipients</b>	<b>Allocation Parameter</b>	<b>Eligible Activities and Expenses</b>
<b>Special Science Elementary Schools</b> SSES is an educational intervention designed to develop children who have keen interest and exceptional abilities in Science and Mathematics	104 public elementary schools	Budget allocation equally divided among the 104 implementing schools at P354,923.00 per recipient school	<ul style="list-style-type: none"><li>• Conduct of investigatory projects and student researches relative to the program;</li><li>• Participation of pupils in development activities such as leadership training workshops, seminars and conferences related to the program;</li><li>• Professional training and development of teachers and school heads including participation in program-related seminars, conferences and workshops ;</li><li>• Purchase of assessment materials and payment for services of psychologists and psychometricians in the screening and identification of entrants;</li><li>• Minor repairs and maintenance of facilities and devices such as science model apparatuses, scientific tools and equipment.</li></ul>
<b>Special Education</b> A program for learners with special needs and disabilities including those who are gifted and talented for the elementary level.	416 elementary SPED Centers and 349 secondary schools with SPED enrolment of a minimum of 20 students	SPED Center/ elementary schools: P 800.00 per pupil. Secondary schools with SPED enrolment of a minimum of 20 students: P86,112.00 per school	<ul style="list-style-type: none"><li>• Participation of pupils/students in development activities such as training, camp activities, sports and other SPED-related activities;</li><li>• Implementation of the Transition Program.</li><li>• Professional training and development of teachers and school heads including participation in program-related seminars, conferences and workshops;</li><li>• Purchase of psychological and other assessment tests and payment for services of psychologists and psychometricians in the screening and identification of entrants</li></ul>

Brief Description	Recipients	Allocation Parameter	Eligible Activities and Expenses
<p><b>Financial Assistance to Regional Science High Schools (RSHS)</b> A program aimed to strengthen Science and Mathematics education by offering an accelerated curriculum on science and mathematics, information and technology, with required courses and a wide selection of electives, and opportunities for independent student research.</p>	<p>17 Public secondary schools in 17 Regions implementing the RSHS Program</p>	<p>Fixed Cost: P1,150,000.00 Variable Allocation: P2,000.00 per student</p>	<ul style="list-style-type: none"> <li>• Conduct of investigatory projects and student researches relative to the program including payment for supplies, laboratory tests, rentals of equipment, spaces and transport;</li> <li>• Participation of students in development activities such as Science and Math competition, training, workshops, and other program-related seminars and conferences;</li> <li>• Professional training and development of Science and Mathematics teachers and school heads including participation in related seminars, conferences and workshop;</li> <li>• Minor repair and maintenance of science laboratories and existing science equipment</li> </ul>
<p><b>Science, Technology and Engineering Program (formerly ESEP)</b> A program designed to strengthen Science and Math education delivered through special science classes in selected public secondary schools nationwide.</p>	<p>200 schools (including two new schools in ARMM).</p>	<p>Each of the 198 implementing schools at P268,000.00 while the two schools in ARMM at P178,000.00 each in its first year of implementation</p>	<ul style="list-style-type: none"> <li>• Conduct of investigatory projects, student researches relative to the program including payment for supplies, laboratory tests, rentals of equipment, spaces and transport;</li> <li>• Participation of students in development activities such as Science and Math competition, training, workshops, and other related seminars and conferences;</li> <li>• Professional training and development of Science and Mathematics teachers and school heads including participation in related seminars, conferences and workshops;</li> <li>• Minor repairs and maintenance of science laboratories and existing science equipment</li> </ul>

Brief Description	Recipients	Allocation Parameter	Eligible Activities and Expenses
<p><b>Special Program for the Arts:</b> A nationwide program for secondary students with potential and talents in the arts namely: Music Visual Arts, Theater Arts, Media Arts, Creative Writing and Dance.</p>	<p>17 public secondary schools at one school per region</p>	<p>Budget allocation equally divided among the 34 implementing schools at P500,000.00 per recipient school</p>	<ul style="list-style-type: none"> <li>• Student development activities such as participation in DepEd-approved festivals and competitions;</li> <li>• Professional training and development of teachers and school heads including participation in Arts-related seminars, conferences and workshops;</li> <li>• Purchase of supplies related to arts including costumes/uniform in the different arts areas</li> </ul>
<p><b>Special Program for Sports:</b> A program aimed to address the needs of secondary students with potential/talents in sports namely: Archery, Arnis, Athletics, Badminton, Basketball, Baseball, Chess, Football, Gymnastics, Sepak Takraw, Softball, Swimming, Table Tennis, Taekwondo, Tennis and Volleyball</p>	<p>17 public secondary schools at one school per region</p>	<p>Budget allocation equally divided among the 34 implementing schools at P500,000.00 per recipient school</p>	<ul style="list-style-type: none"> <li>• Student development activities such as participation in DepEd-approved festivals and competitions;</li> <li>• Professional training and development of teachers and school heads including participation in Sports-related seminars, conferences and workshops;</li> <li>• Purchase of supplies related to arts and sports including costumes/uniform in the different sports areas;</li> </ul>

# Program(s)/Project(s) Implementation Process Flow



LEGEND: AIP-Annual Implementation Plan  
 MDP-Monthly Disbursement Program  
 NCA-Notice of Cash Allocation  
 IU-Implementing Unit  
 RO-PPRD – Policy, Planning and Research Division  
 RO-QAD – Quality Assurance Division  
 RO-FTAD – Field Technical Assistance Division



(Enclosure No. 2a to DepEd Order No. 15, s. 2014)

Department of Education  
 FY 2014 Work and Financial Plan Part 1

School Name : \_\_\_\_\_  
 School ID (EBEIS) : \_\_\_\_\_  
 UACS Code (if applicable) : \_\_\_\_\_  
 Funding Source : \_\_\_\_\_

Component and Activity	Performance Indicator	Quarter 1												Quarter 2			
		January		February		March		Total		April		May		June		Total	
		Target	Amount	Target	Amount	Target	Amount	Target	Amount	Target	Amount	Target	Amount	Target	Amount	Target	Amount
(1)	(2)	(3)	(4)	(5)	(6)	(7)	(8)	(9)	(10)	(11)	(12)	(13)	(14)	(15)	(16)	(17)	(18)
<b>Learner Development</b>	<b>No. of learners benefited</b>																
Activity 1																	
Activity n																	
<b>Capacity Building</b>	<b>No. of teachers benefited</b> <b>No. of School Heads benefited</b>																
Activity 1																	
Activity n																	
<b>Research</b>	<b>No. of researches conducted</b>																
Activity 1																	
Activity n																	
<b>Assessment</b>	<b>No. of learners assessed</b>																
Activity 1																	
Activity n																	
<b>Learning Environment</b>	<b>No. of devices repaired</b> <b>No. of facilities repaired</b>																
Activity 1																	
Activity n																	
<b>Total</b>																	

Prepared by: \_\_\_\_\_

Date: \_\_\_\_\_

Approved by: \_\_\_\_\_

Date: \_\_\_\_\_

School Head \_\_\_\_\_

## I N S T R U C T I O N S

The **Work and Financial Plan (WFP)** shall be prepared based on the approved activities of the school's Annual Implementation Plan (AIP) to be funded by the granted subsidy. Accordingly, the recipient school shall prepare a separate WFP for every granted subsidy (i.e. A school with two funding sources will have two separate WFPs).

- A. Prior filling-up of the WFP, the recipient school shall indicate the **School's Name, School ID from the EBELS, Unified Accounting Code Structure (UACS) Code (if applicable) and Funding Source** of the respective school.
- B. Column 1 shall reflect the **Components and Activities** indicated in the Work Plan. The recipient school shall list and classify activities according to the identified components which are derived from the eligible activities and expenses from the unified guidelines.
- C. Column 2 shall reflect the corresponding **Performance Indicator** or desired outputs to be delivered for the indicated activities.
- D. Columns 3, 5, & 7 shall reflect the corresponding **monthly physical targets** of each activity for each performance indicator of every component for the first quarter.
- E. Column 9 shall reflect the **total physical targets for the first quarter** corresponding to each activity for each performance indicator of every given component.
- F. Columns 4, 6 & 8 shall reflect the corresponding **monthly expenses for the set targets** of each activity for each performance indicator of every component for the first quarter.
- G. Column 10 shall reflect the **total expenses for the first quarter** corresponding to the set targets of each activity for each performance indicator of every given component.
- H. Columns 11, 13, & 15 shall reflect the corresponding **monthly physical targets** of each activity for each performance indicator of every component for the second quarter.
- I. Column 17 shall reflect the **total physical targets for the second quarter** corresponding to each activity for each performance indicator of every component.
- J. Columns 12, 14 & 16 shall reflect the corresponding **monthly expenses for the set targets** of each activity for each performance indicator of every component for the second quarter.
- K. Column 18 shall reflect the **total expenses for the second quarter** corresponding to the set targets of each activity for each performance indicator of every given component.

*\* This form shall be accomplished and submitted to the Division Office (DO) by the recipient school within the 4th week of February to the 1st week of March.*

**Department of Education  
FY 2014 Work and Financial Plan Part 2**

School Name : \_\_\_\_\_  
 School ID (EBEIS) : \_\_\_\_\_  
 UACS Code (if applicable) : \_\_\_\_\_  
 Funding Source : \_\_\_\_\_

Component and Activity	Performance Indicator	Quarter 3												Quarter 4				Full Year	
		July		August		September		Total		October		November		December		Total			
		Target (19)	Amount (20)	Target (21)	Amount (22)	Target (23)	Amount (24)	Target (25)	Amount (26)	Target (27)	Amount (28)	Target (29)	Amount (30)	Target (31)	Amount (32)	Target (33)	Amount (34)	Target (35)	Amount (36)
<b>Learner Development</b>	<b>No. of learners benefitted</b>																		
Activity 1																			
Activity n																			
<b>Capacity Building</b>	<b>No. of teachers benefitted</b>																		
Activity 1																			
Activity n																			
<b>Research</b>	<b>No. of researches conducted</b>																		
Activity 1																			
Activity n																			
<b>Assessment</b>	<b>No. of learners assessed</b>																		
Activity 1																			
Activity n																			
<b>Learning Environment</b>	<b>No. of devices repaired</b>																		
Activity 1																			
Activity n																			
<b>Learning Environment</b>	<b>No. of facilities repaired</b>																		
Activity 1																			
Activity n																			
<b>Total</b>																			

Prepared by: \_\_\_\_\_ Date: \_\_\_\_\_

Approved by: \_\_\_\_\_ Date: \_\_\_\_\_

School Head \_\_\_\_\_

## I N S T R U C T I O N S

*The **Work and Financial Plan (WFP)** shall be prepared based on the approved activities of the school's Annual Implementation Plan (AIP) to be funded by the granted subsidy. Accordingly, the recipient school shall prepare a separate WFP for every granted subsidy (i.e. A school with two funding sources will have two separate WFPs).*

- A. Prior filling-up of the WFP, the recipient school shall indicate the **School's Name, School ID from the EBEIS, Unified Accounting Code Structure (UACS) Code (if applicable) and Funding Source** of the respective school.
- B. Column 1 shall reflect the **Components and Activities** indicated in the Work Plan. The recipient school shall list and classify activities according to the identified components which are derived from the eligible activities and expenses from the unified guidelines.
- C. Column 2 shall reflect the corresponding **Performance Indicator** or desired outputs to be delivered for the indicated activities.
- D. Columns 19, 21, & 23 shall reflect the corresponding **monthly physical targets** of each activity for each performance indicator of every component for the third quarter.
- E. Column 25 shall reflect the **total physical targets for the third quarter** corresponding to each activity for each performance indicator of every given component.
- F. Columns 20, 22, & 24 shall reflect the corresponding **monthly expenses for the set targets** of each activity for each performance indicator of every component for the third quarter.
- G. Column 26 shall reflect the **total expenses for the third quarter** corresponding to the set targets of each activity for each performance indicator of every given component.
- H. Columns 27, 29, & 31 shall reflect the corresponding **monthly physical targets** for each performance indicator of every component indicated for the fourth quarter.
- I. Column 33 shall reflect the **total physical targets for the fourth quarter** corresponding to each activity for each performance indicator of every component.
- J. Columns 28, 30, & 32 shall reflect the corresponding **monthly expenses for the set targets** of each activity for each performance indicator of every component for the fourth quarter.
- K. Column 34 shall reflect the **total expenses for the fourth quarter** corresponding to the set targets of each activity for each performance indicator of every given component.
- L. Column 35 shall reflect the **total annual physical targets** corresponding to each activity for each performance indicator of every given component.
- M. Column 36 shall reflect the **total annual expenses for the set targets** corresponding to each activity for each performance indicator of every given component.

*\* This form shall be accomplished and submitted to the Division Office (DO) by the recipient school within the 4th week of February to the 1st week of March.*

**PHYSICAL AND FINANCIAL ACCOMPLISHMENTS  
for the Quarter Ending \_\_\_\_\_**

School Name: \_\_\_\_\_ Amount of subsidy received: \_\_\_\_\_ Date: \_\_\_\_\_ Funding Source: \_\_\_\_\_  
 School ID (EBEIS): \_\_\_\_\_ Check No.: \_\_\_\_\_ Date: \_\_\_\_\_  
 Division: \_\_\_\_\_ Amount Utilized: \_\_\_\_\_ Date: \_\_\_\_\_  
 Region: \_\_\_\_\_ Amount Liquidated: \_\_\_\_\_ Date: \_\_\_\_\_

Component and Activity Description	Unit of Measure	Annual Targets		Targets		Accomplishments		Variance	Remarks
		Physical	Financial	Physical	Financial	Physical	Financial		
(1)	(2)	(3)	(4)	(5)	(6)	(7)	(8)	(9)	(10)
<b>Learner Development</b> Activity 1 Activity n	No. of learners benefited								
<b>Capacity Building</b> Activity 1 Activity n	No. of teachers benefited No. of SHs benefited								
<b>Learning Materials (LMs)</b> Activity 1 Activity n	No. of LMs developed No. of LMs procured								
<b>Monitoring and Evaluation</b> Activity 1 Activity n	No. of classes observed								
<b>Advocacy</b> Activity 1 Activity n	No. of advocacy activities conducted								
<b>Research</b> Activity 1 Activity n	No. of research conducted								
<b>Assessment</b> Activity 1 Activity n	No. of assessment conducted								
<b>Others: (Specify)</b> Activity 1 Activity n									

Prepared by: \_\_\_\_\_ Date: \_\_\_\_\_

Approved by: \_\_\_\_\_ Date: \_\_\_\_\_

School Head

**INSTRUCTIONS**

- The physical and financial accomplishment report shall reflect the school's actual physical accomplishments vis-a-vis the quarterly target's of the proposed activities to be charged to the subsidy, as reflected in the school's Annual Implementation Plan.
- Column 1 shall reflect the Components and Activities. Classify the activities to the components that it will support/pursue.
- Column 2 shall reflect the Unit of Measure.
- Column 3 shall reflect the Annual Physical Targets.
- Column 4 shall reflect the Annual Financial Targets.
- Column 5 shall reflect the physical targets intended for the given quarter.
- Column 6 shall reflect the financial targets intended for the given quarter.
- Column 7 shall reflect the physical accomplishment for the given quarter.
- Column 8 shall reflect the financial accomplishment for the given quarter.
- Column 9 reflect the difference between column 7 and column 5
- Column 9 reflect the difference between column 7 and column 5
- Column 10 reflect the reason for variance.

**(Enclosure No. 2c to DepEd Order No. 15, s. 2014)**

Department of Education  
FY 2014 Physical Plan

Division Name : \_\_\_\_\_  
 Division ID (DBIS) : \_\_\_\_\_  
 UACS Code : \_\_\_\_\_  
 Pending Source : \_\_\_\_\_

School Name and Components	School ID (DBIS)	UACS Code	Performance Indicator	Quarter 1				Quarter 2			Quarter 3			Quarter 4			FULL YEAR Total		
				Jan 1-31	Feb 1-28	Mar 1-31	Total 8-31-14	Apr 1-30	May 1-31	Total 12-31-14	Jun 1-30	Jul 1-31	Aug 1-31	Sept 1-30	Total 10-31-14-15	Oct 1-31		Nov 1-30	Dec 1-31
Non-Implementing Units (Non-IUS) Elementary Schools School 1 Learner Development Capacity Building Research Assessment Learning Environment			No. of learners benefited No. of teachers benefited No. of Sch Heads benefited No. of researchers conducted No. of learners assessed No. of devices repaired No. of facilities repaired																
School n Learner Development Capacity Building Research Assessment Learning Environment			No. of learners benefited No. of teachers benefited No. of Sch Heads benefited No. of researchers conducted No. of learners assessed No. of devices repaired No. of facilities repaired																
Secondary Schools School 1 Learner Development Capacity Building Research Assessment Learning Environment			No. of learners benefited No. of teachers benefited No. of Sch Heads benefited No. of researchers conducted No. of learners assessed No. of devices repaired No. of facilities repaired																
School n Learner Development Capacity Building Research Assessment Learning Environment			No. of learners benefited No. of teachers benefited No. of Sch Heads benefited No. of researchers conducted No. of learners assessed No. of devices repaired No. of facilities repaired																
<b>Implementing Units (IUS)</b> Secondary Schools School 1 Learner Development Capacity Building Research Assessment Learning Environment			No. of learners benefited No. of teachers benefited No. of Sch Heads benefited No. of researchers conducted No. of learners assessed No. of devices repaired No. of facilities repaired																
School n Learner Development Capacity Building Research Assessment Learning Environment			No. of learners benefited No. of teachers benefited No. of Sch Heads benefited No. of researchers conducted No. of learners assessed No. of devices repaired No. of facilities repaired																
<b>Total Division</b> Learner Development Capacity Building Research Assessment Learning Environment			No. of learners benefited No. of teachers benefited No. of Sch Heads benefited No. of researchers conducted No. of learners assessed No. of devices repaired No. of facilities repaired																

Prepared by: \_\_\_\_\_ Date: \_\_\_\_\_

Approved by: \_\_\_\_\_ Date: \_\_\_\_\_

Head of the Division \_\_\_\_\_

**I N S T R U C T I O N S**

The **Division Physical Plan** shall be prepared based on the consolidated physical targets of the schools under the division called from the activities on their approved Annual Implementation Plan (AIP). Accordingly, the Division Office (DO) shall prepare a separate Physical Plan for every granted subsidy on the schools concerned. (i.e. A division with two subsidies funding schools under it shall prepare two separate Physical Plan.)

- A. Prior filling up of the Physical Plan, the DO shall indicate the **Division Name, Division ID from the EBIS, Unified Accounting Code Structure (UACS) Code and Funding Source** of the respective division.
- B. Column 1 shall reflect the **School Name** of the consolidated non-implementing units (non-IUS), both elementary and secondary, and implementing units (IUS). *Note: Listed under each school are five (5) identified components derived from the eligible activities and expenses from the unified guidelines.*
- C. Column 2 shall reflect the **School ID** of each school identified from the EBIS.
- D. Column 3 shall reflect **VACS Code** of each school.
- E. Column 4 reflects the corresponding **Performance Indicator** or desired outputs to be delivered for each given component.
- F. Columns 5, 6, & 7 shall reflect the corresponding **monthly physical targets** for each performance indicator of every component for the first quarter.
- G. Column 8 shall reflect the **total physical targets for the first quarter** corresponding to each performance indicator of every given component.
- H. Columns 9, 10, & 11 shall reflect the corresponding **monthly physical targets** for each performance indicator of every component for the second quarter.
- I. Column 12 shall reflect the **total physical targets for the second quarter** corresponding to each performance indicator of every given component.
- J. Columns 13, 14 & 15 shall reflect the corresponding **monthly physical targets** for each performance indicator of every component for the third quarter.
- K. Column 16 shall reflect the **total physical targets for the third quarter** corresponding to each performance indicator of every given component.
- L. Columns 17, 18, & 19 shall reflect the corresponding **monthly physical targets** for each performance indicator of every component for the fourth quarter.
- M. Column 20 shall reflect the **total physical targets for the fourth quarter** corresponding to each performance indicator of every given component.
- N. Column 21 shall reflect the **total annual physical targets** corresponding to each performance indicator of every given component.

*\* This form shall be accomplished and submitted to the Regional Office (RO) by the DOs within the 1st and 2nd week of March.*

(Enclosure No. 2d to DepEd Order No. 15, s. 2014)

Department of Education  
 FY 2014 Financial Plan

Division Name : \_\_\_\_\_  
 Division ID (EBEIS) : \_\_\_\_\_  
 UACS Code : \_\_\_\_\_  
 Funding Source : \_\_\_\_\_

School Name	School ID (EBEIS)	UACS Code	Total Cash Program (TCP)	Tax Remittance Advice (TRA)	Net Program	Full Year Requirement																
						Quarter 1			Quarter 2			Quarter 3			Quarter 4							
						Jan	Feb	Mar	Apr	May	Jun	Jul	Aug	Sept	Oct	Nov	Dec					
1	2	3	4	5	6-4.5	7	8	9	10-7+8+9	11	12	13	14=11+12+13	15	16	17	18-15+16+17	19	20	21	22-19-20-21	
<b>Non-Implementing Units (Non-IUS)</b>																						
Elementary Schools																						
1																						
2																						
Secondary Schools																						
1																						
2																						
Sub-Total (IUS)																						
Implementing Units (IUS)																						
1																						
2																						
Sub-Total (IUS)																						
Total Division																						

Prepared by: \_\_\_\_\_

Prepared by: \_\_\_\_\_

Approved by: \_\_\_\_\_

Budget Officer  
 Date: \_\_\_\_\_

Budget Officer  
 Date: \_\_\_\_\_

Division Office Head  
 Date: \_\_\_\_\_



## I N S T R U C T I O N S

The **Division Financial Plan or the Monthly Disbursement Program (MDP)** shall be prepared by the Division Office (DO) based on the consolidated estimated costs of schools for activities called from their approved Annual Implementation Plan (AIP). Accordingly, the DO shall prepare a separate MDP for every granted subsidy on the schools concerned. (i.e. A division with two subsidiaries funding schools under it shall prepare two separate MDPs.)

- A. Prior filing-up of the Financial Plan, the DO shall indicate the **Division Name, Division ID from the EBELS, and Unified Accounting Code Structure (UACS) Code** of the respective division.
- B. Column 1 shall reflect the **School Name** of non-implementing units (non-IUS), both elementary and secondary, and implementing units (IUS).
- C. Column 2 shall reflect the **School ID** of each school identified from the EBELS.
- D. Column 3 shall reflect the **UACS Code** of each school.
- E. Column 4 shall reflect the **Total Cash Program (TCP)** or the total annual estimated cost of the schools.
- F. Column 5 shall reflect the estimated requirements pertaining to remittance of taxes through the **Tax Remittance Advice (TRA)**. The estimated taxes shall be based on the following: a) for Personal Services (PS), 8% withholding tax for salaries; and, b) for MOOE/CO, 5% withholding tax.
- G. Column 6 shall reflect the **Net Program** or the difference between the TCP and TRA (Column 4 - Column 5).
- E. Columns 7, 8, & 9 shall reflect the corresponding **monthly estimated cost of each school** for the first quarter.
- F. Column 10 shall reflect the corresponding **total estimated cost for the first quarter** of each school.
- G. Columns 11, 12, & 13 shall reflect the corresponding **monthly estimated cost of each school** for the second quarter.
- H. Column 14 shall reflect the corresponding **total estimated cost for the second quarter** of each school.
- I. Columns 15, 16, & 17 shall reflect the corresponding **monthly estimated cost of each school** for the third quarter.
- J. Column 18 shall reflect the corresponding **total estimated cost for the third quarter** of each school.
- K. Columns 19, 20, & 21 shall reflect the corresponding **monthly estimated cost of each school** for the fourth quarter.
- L. Column 22 shall reflect the corresponding **total estimated cost for the fourth quarter** of each school.

\* This form shall be accomplished and submitted to the Regional Office (RO) by the DOs within the 1st and 2nd week of March.

PHYSICAL AND FINANCIAL ACCOMPLISHMENTS  
for the Quarter Ending \_\_\_\_\_

School Name: \_\_\_\_\_  
School ID (BEBIS): \_\_\_\_\_  
Division: \_\_\_\_\_  
Region: \_\_\_\_\_

Amount of subsidy received: \_\_\_\_\_  
Check No.: \_\_\_\_\_  
Amount Utilized: \_\_\_\_\_  
Annual Liquidated: \_\_\_\_\_

Date: \_\_\_\_\_  
Date: \_\_\_\_\_  
Date: \_\_\_\_\_  
Date: \_\_\_\_\_  
Funding Source: \_\_\_\_\_

Component and Activity	Performance Indicator	Annual Targets		Targets		Accomplishments					Variance		Remarks				
		Physical	Financial	Physical	Financial	Physical			Financial		Physical	Financial					
						Month 1	Month 2	Month 3	Total	Month 1				Month 2	Month 3	Total	
(1)	(2)	(3)	(4)	(5)	(6)	(7)	(8)	(9)	(10-7+8+9)	(11)	(12)	(13)	(14-11+12+13)	(15-5-10)	(16-6-14)	(17)	
<b>Learner Development</b> Activity 1 Activity n	<b>No. of learners benefitted</b>																
<b>Capacity Building</b> Activity 1 Activity n	<b>No. of teachers benefitted</b> <b>No. of School Heads benefitted</b>																
<b>Research</b> Activity 1 Activity n	<b>No. of researches conducted</b>																
<b>Assessment</b> Activity 1 Activity n	<b>No. of learners assessed</b>																
<b>Learning Environment</b> Activity 1 Activity n	<b>No. of devices repaired</b> <b>No. of facilities repaired</b>																

Prepared by: \_\_\_\_\_

Date: \_\_\_\_\_

Approved by: \_\_\_\_\_

Date: \_\_\_\_\_

School Head

## I N S T R U C T I O N S

*The **School Physical and Financial Accomplishment Report** shall be prepared by the recipient school based on the Work and Financial Plan (WFP) it submitted to its Division Office (DO). Accomplishments shall be based on the activities called from their approved Annual Implementation Plan (AIP) as funded by granted subsidy. Accordingly, the recipient school shall prepare a separate Accomplishment Report for every granted subsidy (i.e. A school with two funding sources will have two separate accomplishment reports.)*

- A. Prior filling-up of the Accomplishment Form, the recipient school shall indicate the **School Name, School ID from the EBELIS, Division, and Region** of the respective school. The **Amount of subsidy received, Check Number, Amount Utilized, Amount Liquidated and Funding Source** with their **corresponding dates** shall also be provided.
- B. Column 1 shall reflect the **Components and Activities**. The recipient school shall list and classify activities based on the identified components which are derived from the eligible activities and expenses indicated in the unified guidelines.
- C. Column 2 reflects the corresponding **performance indicator** or the output to be delivered of the activities for each given component.
- D. Column 3 shall reflect the corresponding **Annual Physical Targets** of each activity for each performance indicator of every given component.
- E. Column 4 shall reflect the corresponding **Annual Financial Targets** of each activity for each performance indicator of every given component.
- F. Column 5 shall reflect the corresponding **physical targets** of each activity for each performance indicator of every given component for the given quarter.
- G. Column 6 shall reflect the corresponding **financial targets** of each activity for each performance indicator of every given component for the given quarter.
- H. Columns 7, 8, & 9 shall reflect the **monthly physical accomplishment** of each activity for each performance indicator of every given component for the given quarter.
- I. Column 10 shall reflect the **total physical accomplishment for the given quarter** of each activity for each performance indicator of every given component.
- J. Columns 11, 12, & 13 shall reflect the **monthly utilization** of each activity for each performance indicator of every given component for the given quarter.
- K. Column 14 shall reflect the **total amount utilized for the given quarter** for each activity of each performance indicator of every given component.
- L. Column 15 shall reflect the **variance** between the quarterly targets and quarterly accomplishments or the difference between column 5 and column 10.
- M. Column 16 shall reflect the **variance** between the quarterly financial targets and quarterly utilization or the difference between column 6 and column 14.
- N. Column 17 shall reflect **remarks** or reasons for the variance and other implementation issues.

*\* This form shall be submitted to the DO by the recipient school every 3rd day of April, July, October and January.*

(Enclosure No. 2f to DepEd Order No. 15, s. 2014)

FY 2014 PHYSICAL ACCOMPLISHMENTS  
for the Quarter Ending \_\_\_\_\_

Part 1  
Division Name : \_\_\_\_\_  
Division ID (DBIS) : \_\_\_\_\_  
VACS Code : \_\_\_\_\_  
Funding Source : \_\_\_\_\_

School Name and Component	School ID (EBIS)	VACS Code	Performance Indicator	Target				Total <small>8+9+7</small>	Physical Accomplishment			Variance <small>(13-8)=5</small>	Remarks
				Month 1	Month 2	Month 3	Month 1		Month 2	Month 3			
							Month 1		Month 2	Total <small>(12+9)=21</small>			
<b>Division Monitoring and Evaluation</b>				No. of schools observed									
<b>Non-Implementing Units (Non-IUs)</b>													
<b>Elementary Schools</b>													
<b>School 1</b>				No. of learners benefited No. of teachers benefited No. of Sch Heads benefited No. of researches conducted No. of learners assessed No. of devices repaired No. of facilities repaired									
<b>School n</b>				No. of learners benefited No. of teachers benefited No. of Sch Heads benefited No. of researches conducted No. of learners assessed No. of devices repaired No. of facilities repaired									
<b>Secondary Schools</b>													
<b>School 1</b>				No. of learners benefited No. of teachers benefited No. of Sch Heads benefited No. of researches conducted No. of learners assessed No. of devices repaired No. of facilities repaired									
<b>School n</b>				No. of learners benefited No. of teachers benefited No. of Sch Heads benefited No. of researches conducted No. of learners assessed No. of devices repaired No. of facilities repaired									
<b>Implementing Units (IUs)</b>													
<b>Secondary Schools</b>													
<b>School 1</b>				No. of learners benefited No. of teachers benefited No. of Sch Heads benefited No. of researches conducted No. of learners assessed No. of devices repaired No. of facilities repaired									
<b>School n</b>				No. of learners benefited No. of teachers benefited No. of Sch Heads benefited No. of researches conducted No. of learners assessed No. of devices repaired No. of facilities repaired									
<b>Total Division</b>				No. of learners benefited No. of teachers benefited No. of Sch Heads benefited No. of researches conducted No. of learners assessed No. of devices repaired No. of facilities repaired									

Prepared by: \_\_\_\_\_ Date: \_\_\_\_\_  
Approved by: \_\_\_\_\_ Date: \_\_\_\_\_  
Head of the Division

I N S T R U C T I O N S

The **Division Physical Accomplishment Report** shall be prepared by the Division Office (DO) based on the physical accomplishment reports submitted by the schools. Accordingly, the DO shall prepare a separate Accomplishment Report for every granted subsidy (i.e. A division with two funding sources will have two separate accomplishment reports.)

Prior filing-up of the Physical Accomplishment Report, the DO shall indicate the **Division Name, Division ID from the BEBIS, Unified Accounting Code Structure (UACS) Code and Funding Source** of the respective division.

**A. Physical Accomplishment Report.** The DO shall consolidate and reflect the school's actual quarterly physical accomplishments vis-a-vis the quarterly targets.

B. Column 2. The DO shall reflect the **School ID** of the recipient school.

C. Column 3. The DO shall reflect the **UACS code** of the schools.

D. Column 4. The DO shall specify the **performance indicators** for every given component per school.

E. Column 5, 6, & 7. The DO shall specify the corresponding **monthly physical target** of each performance indicator for every given component per school.

F. Column 8. The DO shall specify the **total physical target** of each performance indicator for every given component per school and per quarter.

G. Columns 9, 10, & 11. The DO shall specify the corresponding **physical accomplishments** based on set targets of each performance indicator for every given component per school.

H. Column 12. The DO shall specify the **total accomplishment** of each performance indicator for every given component per school and per quarter.

I. Column 13. The DO shall reflect the **variance** or the difference between column 8 and column 12.

J. Column 14 shall reflect the **remarks** or reasons for not accomplishing the set targets for each component and other implementation issues encountered.

\* This form shall be submitted to the Regional Office (RO) by the DO every 5th day of April, July, October and January.

**FY 2014 FINANCIAL ACCOMPLISHMENTS**  
for the Quarter Ending \_\_\_\_\_

Part 2  
Division Name : \_\_\_\_\_  
Division ID (EBEIS) : \_\_\_\_\_  
UACS Code : \_\_\_\_\_  
Funding Source : \_\_\_\_\_

School Name and Components	School ID (EBEIS)	UACS Code	Performance Indicator	Target			Financial Accomplishment			Variance	Remarks
				Month 1	Month 2	Month 3	Month 1	Month 2	Month 3		
				15	16	17	Total (15+16+17)	19	20		
<b>Division Monitoring and Evaluation</b>											
<b>Non-Implementing Units (Non-IUS)</b>											
<b>Elementary Schools</b>											
<b>School 1</b>											
Leamer Development			No. of learners benefited								
Capacity Building			No. of teachers benefited								
Research			No. of Sch Heads benefited								
Assessment			No. of researchers conducted								
Learning Environment			No. of learners assessed								
			No. of devices repaired								
			No. of facilities repaired								
<b>School 2</b>											
Leamer Development			No. of learners benefited								
Capacity Building			No. of teachers benefited								
Research			No. of Sch Heads benefited								
Assessment			No. of researchers conducted								
Learning Environment			No. of learners assessed								
			No. of devices repaired								
			No. of facilities repaired								
<b>Secondary Schools</b>											
<b>School 1</b>											
Leamer Development			No. of learners benefited								
Capacity Building			No. of teachers benefited								
Research			No. of Sch Heads benefited								
Assessment			No. of researchers conducted								
Learning Environment			No. of learners assessed								
			No. of devices repaired								
			No. of facilities repaired								
<b>School 2</b>											
Leamer Development			No. of learners benefited								
Capacity Building			No. of teachers benefited								
Research			No. of Sch Heads benefited								
Assessment			No. of researchers conducted								
Learning Environment			No. of learners assessed								
			No. of devices repaired								
			No. of facilities repaired								
<b>Implementing Units (IUS)</b>											
<b>Secondary Schools</b>											
<b>School 1</b>											
Leamer Development			No. of learners benefited								
Capacity Building			No. of teachers benefited								
Research			No. of Sch Heads benefited								
Assessment			No. of researchers conducted								
Learning Environment			No. of learners assessed								
			No. of devices repaired								
			No. of facilities repaired								
<b>School 2</b>											
Leamer Development			No. of learners benefited								
Capacity Building			No. of teachers benefited								
Research			No. of Sch Heads benefited								
Assessment			No. of researchers conducted								
Learning Environment			No. of learners assessed								
			No. of devices repaired								
			No. of facilities repaired								
<b>Total Division</b>											
Leamer Development			No. of learners benefited								
Capacity Building			No. of teachers benefited								
Research			No. of Sch Heads benefited								
Assessment			No. of researchers conducted								
Learning Environment			No. of learners assessed								
			No. of devices repaired								
			No. of facilities repaired								

Prepared by: \_\_\_\_\_ Date: \_\_\_\_\_

Approved by: \_\_\_\_\_ Date: \_\_\_\_\_

Head of the Division \_\_\_\_\_

**I N S T R U C T I O N S**

*The Division Financial Accomplishment Report shall be prepared by the Division Office (DO) based on the financial accomplishment reports submitted by the schools. Accordingly, the DO shall prepare a separate Accomplishment Report for every granted subsidy (i.e. A division with two funding sources will have two separate accomplishment reports.)*

Prior filing-up of the Financial Accomplishment Report, the DO shall indicate the **Division Name, Division ID from the EBERS, Unified Accounting Code Structure (UACS) Code and Funding Source** of the respective division.

- A. **Financial Accomplishment Report**. The Division Office (DO) shall consolidate and reflect the school's actual quarterly utilization vis-a-vis the budget allocation.
- B. Column 2. The DO shall reflect the **School ID** of the recipient schools.
- C. Column 3. The DO shall reflect the **UACS code** of the schools.
- D. Column 4. The DO shall specify the **performance indicators** for every given component per school.
- E. Columns 15, 16 & 17. The DO shall specify the corresponding **monthly allocation** for each performance indicator of every given component per school.
- F. Column 18. The DO shall specify the **total target allocation** of each performance indicator for every given component per school and per quarter.
- G. Columns 19, 20, & 21. The DO shall specify the corresponding **amount utilized** based on set targets of each performance indicator for every given component per school.
- H. Column 22. The DO shall specify the **total amount utilized** of each performance indicator for every given component per school and per quarter.
- I. Column 23. The DO shall reflect the **variance** or the difference between column 18 and column 22.
- J. Column 24 shall reflect the **remarks** or reasons for not accomplishing the set targets for each component and other implementation issues encountered.

*\* This form shall be submitted to the Regional Office (RO) by the DO every 5th day of April, July, October and January.*

FY 2014 PHYSICAL ACCOMPLISHMENTS  
for the Quarter Ending \_\_\_\_\_

Part 1  
Region: \_\_\_\_\_  
Region ID (EBEIS) : \_\_\_\_\_  
UACS Code : \_\_\_\_\_

Division Name and Components	Division ID (EBEIS)	UACS Code	Performance Indicator	Target				Physical Accomplishment				Variance	Remarks	
				Month 1	Month 2	Month 3	Total	Month 1	Month 2	Month 3	Total			
				5	6	7	8-5+6+7	9	10	11	(12-9+10-11)			(13-8-12)
Region Monitoring and Evaluation														
Division 1														
Learner Development Capacity Building			No. of learners benefited											
Research Assessment Learning Environment			No. of teachers benefited											
			No. of Sch Heads benefited											
			No. of researches conducted											
			No. of learners assessed											
			No. of devices repaired											
			No. of facilities repaired											
Division n														
Learner Development Capacity Building			No. of learners benefited											
Research Assessment Learning Environment			No. of teachers benefited											
			No. of Sch Heads benefited											
			No. of researches conducted											
			No. of learners assessed											
			No. of devices repaired											
			No. of facilities repaired											
<b>Total Region</b>														
Learner Development Capacity Building			No. of learners benefited											
Research Assessment Learning Environment			No. of teachers benefited											
			No. of Sch Heads benefited											
			No. of researches conducted											
			No. of learners assessed											
			No. of devices repaired											
			No. of facilities repaired											

Prepared by: \_\_\_\_\_ Date: \_\_\_\_\_

Approved by: \_\_\_\_\_ Date: \_\_\_\_\_

Head of the Division \_\_\_\_\_



## I N S T R U C T I O N S

The **Regional Physical Accomplishment Report** shall be prepared by the Regional Office (RO) based on the physical accomplishment reports submitted by the divisions. Accordingly, the RO shall prepare a separate Accomplishment Report for every granted subsidy (i.e. A division with two funding sources will have two separate accomplishment reports.)

- A. **Physical Accomplishment Report.** The Regional Office (RO) shall consolidate the division's actual quarterly physical accomplishments vis-a-vis quarterly targets.
- B. Column 1 shall reflect the **Division Name and Components** consolidated from the recipient schools of every division.
- C. Column 2 shall reflect the **Division ID** identified from the EBBS.
- D. Column 3 shall reflect the **UACS Code** of the divisions.
- E. Column 4 shall specify the **performance indicators** for every given component per division.
- F. Columns 5, 6, & 7 shall specify the corresponding **monthly physical targets** of each performance indicator for every given component per division.
- G. Column 8 shall specify the **total physical target** of each performance indicator for every given component per division at the given quarter.
- H. Columns 9, 10, & 11 shall specify the corresponding **monthly physical accomplishments** based on set targets of each performance indicator for every given component per division.
- I. Column 12 shall specify the **total quarterly accomplishment** for each performance indicator of every given component per division and per quarter.
- J. Column 13 shall reflect the **variance** or the difference between column 8 and column 12.
- K. Column 14 shall reflect the **remarks** or reasons for not accomplishing the set targets for each component and other implementation issues encountered.

\* This form shall be accomplished and submitted to the Planning and Programming Division - Office of Planning Service (PPD-OPS), Central Office by the RO every 7th day of April, July, October and January.

**FY 2014 FINANCIAL ACCOMPLISHMENTS**  
for the Quarter Ending \_\_\_\_\_

Part 2  
Region: \_\_\_\_\_  
Region ID (EBEIS) : \_\_\_\_\_  
UACS Code : \_\_\_\_\_

Division Name and Components	Division ID (EBEIS)	UACS Code (if applicable)	Target				Accomplishment				Variance	Remarks		
			Month 1 Allocation	Month 2 Allocation	Month 3 Allocation	Total Allocation	Month 1 Amount Utilized	Month 2 Amount Utilized	Month 3 Amount Utilized	Total Amount Utilized				
			15	16	17	(18=15+16+17)	19	20	21	(22=19+20+21)				
Region Monitoring and Evaluation														
Division 1 Learner Development Capacity Building Research Assessment Learning Environment														
Division n Learner Development Capacity Building Research Assessment Learning Environment														
<b>Total Region</b> Learner Development Capacity Building Research Assessment Learning Environment														

Prepared by: \_\_\_\_\_

Date: \_\_\_\_\_

Approved by: \_\_\_\_\_

Date: \_\_\_\_\_

Head of the Division \_\_\_\_\_

## I N S T R U C T I O N S

The **Regional Financial Accomplishment Report** shall be prepared by the *Regional Office (RO)* based on the financial accomplishment reports submitted by the divisions. Accordingly, the RO shall prepare a separate Accomplishment Report for every granted subsidy (i.e. A division with two funding sources will have two separate accomplishment reports.)

- A. **Financial Accomplishment Report.** The Regional Office (RO) shall consolidate the divisions actual quarterly utilization vis-a-vis quarterly allocation.
- B. Column 1 shall reflect the **Division Name and Components** consolidated from the recipient schools of every division.
- C. Column 2 shall reflect the **Division ID** identified from the EBELS.
- D. Column 3 shall reflect the **UACS Code** of the divisions.
- E. Column 4 shall specify the **performance indicators** of every given component per division.
- F. Columns 15, 16 & 17 shall reflect the corresponding **monthly allocation** of each performance indicator for every given component per division.
- G. Column 18 shall reflect the **total allocation** for each performance indicator of every given component per division at the given quarter.
- H. Columns 19, 20, & 21 shall reflect the corresponding **monthly utilization** of each performance indicator for every given component per division.
- I. Column 22 shall reflect the **total quarterly utilization** of each performance indicator for every given component per division at the given quarter.
- J. Column 23 shall reflect the **variance** or the difference between column 21 and column 25.
- K. Column 24 shall reflect the **remarks** or reasons for not accomplishing the set targets for each component and other implementation issues encountered.

\* This form shall be accomplished and submitted to the *Planning and Programming Division - Office of Planning Service (PPD-OPS), Central Office* by the RO every 7th day of April, July, October and January.

(Enclosure No. 3a to DepEd Order No. 15, s. 2014)

Support to Special Science Elementary Schools (SSES)

Region	Division	School ID	School Name	Amount (in Php)		
				Direct Release to Regional Offices	Additional Allocation funded By Central Office	Amount per School (in Php)
1	I	La Union 100961	Cantoria Elementary School	300,000.00	54,923.00	354,923.00
2	I	San Fernando City 101036	San Fernando South Central School	300,000.00	54,923.00	354,923.00
3	I	Ilocos Norte 100096	H. Valdez Mem. School	300,000.00	54,923.00	354,923.00
4	I	Candon City 100436	Candon South Central School	300,000.00	54,923.00	354,923.00
5	I	Dagupan City 102151	Malued Central School	300,000.00	54,923.00	354,923.00
6	I	Pangasinan I, Lingayen 101483	Lingayen Central	300,000.00	54,923.00	354,923.00
7	I	Laog City 102202	Shamrock Elementary School	300,000.00	54,923.00	354,923.00
			<b>Sub-total, I</b>	<b>2,100,000.00</b>	<b>384,461.00</b>	<b>2,484,461.00</b>
8	II	Tuguegarao City 104406	Tuguegarao West Central School	300,000.00	54,923.00	354,923.00
9	II	Isabela 103145	Cabagan Central School	300,000.00	54,923.00	354,923.00
10	II	Cagayan 102633	Enrile North Central School	300,000.00	54,923.00	354,923.00
11	II	Cagayan 102717	Malabbac Elementary School	300,000.00	54,923.00	354,923.00
12	II	Santiago City 103842	Santiago West Central School	300,000.00	54,923.00	354,923.00
			<b>Sub-total, II</b>	<b>1,500,000.00</b>	<b>274,615.00</b>	<b>1,774,615.00</b>
13	III	Zambales 107010	Iwas Elementary School	300,000.00	54,923.00	354,923.00
14	III	Pampanga 159524	Don Antonio Lee Chin Uan IS	300,000.00	54,923.00	354,923.00
15	III	Nueva Ecija 105806	Talavera Central School	300,000.00	54,923.00	354,923.00
16	III	Bataan 104642	Cabcaben Elementary School	300,000.00	54,923.00	354,923.00
17	III	Angeles City 107027	Dr. Clemente Dayrit Sr. Elementary School	300,000.00	54,923.00	354,923.00
18	III	San Jose del Monte City 107165	Tungkong Mangga ES	300,000.00	54,923.00	354,923.00
19	III	Balanga City 104557	Cupang Elementary School	300,000.00	54,923.00	354,923.00
20	III	Tarlac 106532	Moncada North CES	300,000.00	54,923.00	354,923.00
21	III	Cabanatuan City 107083	Mayapyap Elementary School	300,000.00	54,923.00	354,923.00
22	III	Gapan City 105319	Gapan North Central School	300,000.00	54,923.00	354,923.00
			<b>Sub-total, III</b>	<b>3,000,000.00</b>	<b>549,230.00</b>	<b>3,549,230.00</b>
23	IV-A	Cavite 108187	Trece Martirez City Elementary School	300,000.00	54,923.00	354,923.00
24	IV-A	Cavite 107857	Amadeo Elementary School	300,000.00	54,923.00	354,923.00
25	IV-A	Laguna 108384	F. Benitez Memorial School	300,000.00	54,923.00	354,923.00

**Support to Special Science Elementary Schools (SSES)**

				<b>Amount (in Php)</b>			
26	IV-A	Batangas	107409	Lemery Pilot Elementary School	300,000.00	54,923.00	354,923.00
27	IV-A	Tanauan City	107781	Tanauan North Central School	300,000.00	54,923.00	354,923.00
28	IV-A	Lipa City	109688	Bagongpook ES	300,000.00	54,923.00	354,923.00
29	IV-A	Sta. Rosa City	108480	Sta. Rosa Elementary School Central I	300,000.00	54,923.00	354,923.00
30	IV-A	Dasmariñas City	107917	Dasmariñas II Central School (Dasmariñas BBES B)	300,000.00	54,923.00	354,923.00
31	IV-A	Quezon	108894	Mauban North Elementary School I	300,000.00	54,923.00	354,923.00
				<b>Sub-total, IVA</b>	<b>2,700,000.00</b>	<b>494,307.00</b>	<b>3,194,307.00</b>
32	IV-B	Oriental Mindoro	110619	Puerto Galera Central School	300,000.00	54,923.00	354,923.00
33	IV-B	Calapan City	111570	Adriatico Memorial School	300,000.00	54,923.00	354,923.00
34	IV-B	Marinduque	109997	Gabaldon Elem. School	300,000.00	54,923.00	354,923.00
35	IV-B	Romblon	111255	Alcantara Central ES	300,000.00	54,923.00	354,923.00
36	IV-B	Palawan	111120	Quezon Central School	300,000.00	54,923.00	354,923.00
				<b>Sub-total, IVB</b>	<b>1,500,000.00</b>	<b>274,615.00</b>	<b>1,774,615.00</b>
37	V	Ligao City	111821	Ligao East Central School	270,000.00	54,923.00	324,923.00
38	V	Triga City	114420	Triga Central School	270,000.00	54,923.00	324,923.00
39	V	Sorsogon City	114563	Sorsogon East CS	270,000.00	54,923.00	324,923.00
40	V	Camarines Sur	112621	Goa Central School	270,000.00	54,923.00	324,923.00
41	V	Camarines Norte	112316	Vinzon Central School	270,000.00	54,923.00	324,923.00
42	V	Legaspi City	114457	Albay Central School	270,000.00	54,923.00	324,923.00
43	V	Tabaco City	114604	Tabaco Northwest Central School	270,000.00	54,923.00	324,923.00
44	V	Albay	111710	Guinobatan East Central School	270,000.00	54,923.00	324,923.00
45	V	Catanduanes	113352	Virac Pilot Elementary School	270,000.00	54,923.00	324,923.00
46	V	Naga City	114501	Naga CS II	270,000.00	54,923.00	324,923.00
				<b>Sub-total, V</b>	<b>2,700,000.00</b>	<b>549,230.00</b>	<b>3,249,230.00</b>
47	VI	Iloilo City	117584	Sto. Domingo ES	300,000.00	54,923.00	354,923.00
48	VI	Iloilo	116643	Pavia Pilot Elem. School	300,000.00	54,923.00	354,923.00
49	VI	Aklan	114766	Lezo Integrated School	300,000.00	54,923.00	354,923.00
50	VI	Negros Occidental	117203	Isabela II Central ES	300,000.00	54,923.00	354,923.00
51	VI	Bacolod City	117473	Paglaum Village ES	300,000.00	54,923.00	354,923.00
52	VI	Guimaras	115821	Buenavista Central School	300,000.00	54,923.00	354,923.00
53	VI	Antique	115224	Canuto B. Pelfanco Sr. E/S	300,000.00	54,923.00	354,923.00
54	VI	Cadiz City	117572	Cadiz West II Elementary School	300,000.00	54,923.00	354,923.00
				<b>Sub-total, VI</b>	<b>2,400,000.00</b>	<b>439,384.00</b>	<b>2,839,384.00</b>
55	VII	Cebu City	119893	Lahug Elementary School	300,000.00	54,923.00	354,923.00

**Support to Special Science Elementary Schools (SSES)**

				<b>Amount (in Php)</b>			
56	VII	Cebu	119477	Minglanilla IICentral ES	300,000.00	54,923.00	354,923.00
57	VII	Tanjay City	120576	Tanjay South CS	300,000.00	54,923.00	354,923.00
58	VII	Bohol	118843	Ubay Central School	300,000.00	54,923.00	354,923.00
59	VII	Mandaue City	119997	Mandaue City Central School	300,000.00	54,923.00	354,923.00
				<b>Sub-total, VII</b>	<b>1,500,000.00</b>	<b>274,615.00</b>	<b>1,774,615.00</b>
60	VIII	Leyte	121079	Baybay I Central School	300,000.00	54,923.00	354,923.00
61	VIII	Southern Leyte	122323	Thomas Oppus Central School	300,000.00	54,923.00	354,923.00
62	VIII	Catbalogan City	123423	Catbalogan III Central School	300,000.00	54,923.00	354,923.00
63	VIII	Calbayog City	123989	Calbayog Pilot CS	300,000.00	54,923.00	354,923.00
64	VIII	Leyte	120910	Bunga Elementary School	300,000.00	54,923.00	354,923.00
65	VIII	Leyte	120939	Alangalang I Central School	300,000.00	54,923.00	354,923.00
				<b>Sub-total, VIII</b>	<b>1,800,000.00</b>	<b>329,538.00</b>	<b>2,129,538.00</b>
66	IX	Zamboanga del Sur	125224	Margosatubig Regional Pilot E/S	300,000.00	54,923.00	354,923.00
67	IX	Zamboanga City	126204	Puitik Central School	300,000.00	54,923.00	354,923.00
				<b>Sub-total, IX</b>	<b>600,000.00</b>	<b>109,846.00</b>	<b>709,846.00</b>
68	X	Misamis Oriental	127705	Jasaan Central School	300,000.00	54,923.00	354,923.00
69	X	Iligan City	128081	Iligan City East I Central School	300,000.00	54,923.00	354,923.00
70	X	Bukidnon	126638	Manolo Fortich CES	300,000.00	54,923.00	354,923.00
71	X	Lanao del Norte	126833	Batangan ES	300,000.00	54,923.00	354,923.00
72	X	Oroquieta City	127437	Oroquieta City Central School	300,000.00	54,923.00	354,923.00
				<b>Sub-total, X</b>	<b>1,500,000.00</b>	<b>274,615.00</b>	<b>1,774,615.00</b>
73	XI	Davao City	129708	Sta. Ana Central Elementary School	300,000.00	54,923.00	354,923.00
74	XI	Davao City	129648	Matina Central School	300,000.00	54,923.00	354,923.00
75	XI	Digos City	129750	Digos City Central ES	300,000.00	54,923.00	354,923.00
76	XI	Davao del Norte	128659	Luna Elementary School	300,000.00	54,923.00	354,923.00
77	XI	Island Garden City of Samal	128598	Angel Villarica Central Elementary School	300,000.00	54,923.00	354,923.00
78	XI	Digos City	129777	Matti ES	300,000.00	54,923.00	354,923.00
79	XI	Davao del Sur	128870	Guhing Central School	300,000.00	54,923.00	354,923.00
				<b>Sub-total, XI</b>	<b>2,100,000.00</b>	<b>384,461.00</b>	<b>2,484,461.00</b>
80	CARAGA	Agusan del Sur	131615	Agusan del Sur Pilot ES (ADSPILS)	300,000.00	54,923.00	354,923.00
81	CARAGA	Surigao City	213501	Surigao City Special Science E/S	300,000.00	54,923.00	354,923.00
82	CARAGA	Agusan del Norte	131526	North Cabadbaran Central Elementary School	300,000.00	54,923.00	354,923.00
83	CARAGA	Agusan del Norte	131500	Nasipit Central E/S	300,000.00	54,923.00	354,923.00
84	CARAGA	Bisitlig City	132609	Bisitlig Central School	300,000.00	54,923.00	354,923.00

**Support to Special Science Elementary Schools (SSES)**

				Amount (in Php)			
85	CARAGA	Surigao del Sur	132979	Tandag Pilot ES	300,000.00	54,923.00	354,923.00
86	CARAGA	Surigao del Norte	132434	Mainit Central School	300,000.00	54,923.00	354,923.00
87	CARAGA	Siargao	132152	General Luna Central E/S	300,000.00	54,923.00	354,923.00
88	CARAGA	Dinagat Island	132513	Aurelio E/S	300,000.00	54,923.00	354,923.00
89	CARAGA	Butuan City	132027	Ampayon Central E/S	300,000.00	54,923.00	354,923.00
				<b>Sub-total, CARAGA</b>	<b>3,000,000.00</b>	<b>549,230.00</b>	<b>3,549,230.00</b>
90	CAR	Benguet	135655	Lepanto Elementary School	300,000.00	54,923.00	354,923.00
91	CAR	Abra	135024	Tayum Elementary School	300,000.00	54,923.00	354,923.00
92	CAR	Mt. Province	136328	Sabangan Central School	300,000.00	54,925.00	354,925.00
93	CAR	Kalinga	136086	Bulanao Central School	300,000.00	54,925.00	354,925.00
94	CAR	Benguet	135624	La Trinidad Central School	300,000.00	54,925.00	354,925.00
95	CAR	Apayao	135336	Luna Elementary School	300,000.00	54,925.00	354,925.00
				<b>Sub-total, CAR</b>	<b>1,800,000.00</b>	<b>329,546.00</b>	<b>2,129,546.00</b>
96	NCR	Quezon City	136509	Project 6 Elementary School	300,000.00	54,923.00	354,923.00
97	NCR	Makati City	136705	Francisco Benitez Elementary School-Main	300,000.00	54,923.00	354,923.00
98	NCR	Muntinlupa City	136904	Putatan Elementary School	300,000.00	54,923.00	354,923.00
99	NCR	Mandaluyong City	136665	Dona Pilar C. Gonzaga Elementary School	300,000.00	54,923.00	354,923.00
100	NCR	Valenzuela City	227002	Tañada Elementary School (Santiago A. de Guzman ES)	300,000.00	54,923.00	354,923.00
101	NCR	Taguig	136876	Taguig Elementary School	300,000.00	54,923.00	354,923.00
102	NCR	Marikina City	136676	Marikina Elementary School	300,000.00	54,923.00	354,923.00
103	NCR	Manila	136484	Fernando Ma. Guerrero E/S	300,000.00	54,923.00	354,923.00
104	NCR	Parañaque City	136759	San Antonio Elementary School	300,000.00	54,923.00	354,923.00
				<b>Sub-total, NCR</b>	<b>2,700,000.00</b>	<b>494,307.00</b>	<b>3,194,307.00</b>
				Central Office*	<b>5,712,000.00</b>		
				<b>GRAND TOTAL</b>	<b>36,612,000.00</b>	<b>5,712,000.00</b>	<b>36,612,000.00</b>

\* Central Office allocation (in GAA) to be distributed equally to recipient schools

(Enclosure No. 3b.1 to DepEd Order No. 15, s. 2014)  
 FY 2014 Support to SPED Centers/Schools - Elementary Level

Region	Division	School ID	School Name	Physical Target	Amount per School (in Php)
1	Ilocos Norte	100010	Bacarra SPED Center	653	522,400.00
2	Batac City	100026	Badoc South Central School SPED Center	668	534,400.00
3	Laoag City	100075	Catalino Acosta Mem. School SPED Center	487	389,600.00
4	Ilocos Sur	102193	A. P. Santos Elem. School SPED Center	673	538,400.00
5	Ilocos Sur	100544	Narvacan South Central Elem. School SPED Center	681	544,800.00
6	Ilocos Sur	100697	Sabuanan ES SPED Center	674	539,200.00
7	Ilocos Sur	100490	San Juan ES SPED Center	676	540,800.00
8	Ilocos Sur	100403	Cabugao CS SPED Center	677	541,600.00
9	Vigan City	100800	Vigan Central School SPED Center	680	544,000.00
10	Candon City	100436	Candon South Central School SPED Center	681	544,800.00
11	La Union	100819	Aringay Central School SPED Center	679	543,200.00
12	La Union	100875	Balaoan Central School SPED Center	683	546,400.00
13	La Union	101016	Rosario Integrated School SPED Center	679	543,200.00
14	La Union	100801	Agoo East Central School SPED Center	495	396,000.00
15	San Fernando City	100940	Caba Central ES SPED Center	625	500,000.00
16	San Fernando City	101030	La Union SPED Center (San Fernando I)	638	510,400.00
17	Urdaneta City	102283	Urdaneta City SPED Center	622	497,600.00
18	Dagupan City	102152	Dagupan City Division SPED Center	639	511,200.00
19	San Carlos City	100944	San Carlos City SPED Center	627	501,600.00
20	Alaminos City	101166	Alaminos City I SPED Center	639	511,200.00
21	Alaminos City	101181	Luicap ES SPED Center	655	524,000.00
22	Pangasinan I	101886	Tomana Elem. School SPED Center (Rosales)	638	510,400.00
23	Pangasinan I	101906	San Fabian Integrated School SPED Center	636	508,800.00
24	Pangasinan I	101800	Manaoag Central School SPED Center	646	516,800.00
25	Pangasinan II	101756	Binalonan North CS SPED Center	637	509,600.00
26	Pangasinan II	101858	Nantangalan ES SPED Center (Pozurrobio)	627	501,600.00
27	Pangasinan II	101976	San Nicolas West Central School	473	378,400.00
28	Pangasinan II	101815	Mangaldan Integrated School	481	384,800.00
29	Pangasinan I	101585	Mangatarem CS SPED Center	569	455,200.00
30	Pangasinan I	101483	Lingayen I CS SPED Center	558	446,400.00
31	Pangasinan I	101228	Bani East CS SPED Center	560	448,000.00
32	Pangasinan I	101523	Mabini CS SPED Center	556	444,800.00
33	Pangasinan I	101622	Mapandan CS SPED Center	569	455,200.00
34	Pangasinan I	101342	Bolinao Integrated School SPED Center	557	445,600.00
35	Pangasinan I	101444	Dasol CS SPED Center	548	438,400.00
<b>REGION I TOTAL</b>				<b>21,586</b>	<b>17,268,800.00</b>
1	Tuguegarao City	104400	Tuguegarao East CS SPED Center	662	529,600.00
2	Tuguegarao City	104406	Tuguegarao North Central School SPED Center	575	460,000.00
3	Tuguegarao City	104402	Catagaman Elem. School SPED Center	658	526,400.00
4	Tuguegarao City	104406	Tuguegarao West CS SPED Center	569	455,200.00



FY 2014 Support to SPED Centers/Schools - Elementary Level

Region	Division	School ID	School Name	Physical Target	Amount per School (in Php)
5	II	103742	San Mariano Central School SPED Center	597	477,600.00
6	II	103364	Ilagan East Central School SPED Center	584	467,200.00
7	II	103402	Ilagan South CS SPED Center	521	416,800.00
8	II	103228	Cauayan South Central School SPED Center	530	424,000.00
9	II	103984	Bayombong Central School SPED Center	537	429,600.00
10	II	103952	Bambang Central School SPED Center	569	455,200.00
11	II	104173	Solano East Central SPED Center	554	443,200.00
12	II	104223	Villaverde CS SPED Center	569	455,200.00
13	II	104280	Diffun Central School SPED Center	565	452,000.00
14	II	104255	Cabarruguis Central School SPED Center	570	456,000.00
15	II	103830	Santiago North Central School SPED Center	575	460,000.00
16	II	104340	Sto. Nino ES SPED Center	568	454,400.00
17	II	102442	Aparri CS SPED Center	561	448,800.00
18	II	102311	Basco Central School SPED Center	423	338,400.00
<b>REGION II TOTAL</b>				<b>10,187</b>	<b>8,149,600.00</b>
1	CAR	Benguet	Benguet SPED Center (La Trinidad)	677	541,600.00
2	CAR	Baguio City	Baguio City SPED Center	698	558,400.00
3	CAR	Mt. Province	Ifugao SPED Center (Lagawe CS)	673	538,400.00
4	CAR	Ifugao	Mt. Province SPED Center	682	545,600.00
5	CAR	Apayao	Kalinga SPED Center (Bolanao CS)	667	533,600.00
<b>CAR TOTAL</b>				<b>3,397</b>	<b>2,717,600.00</b>
1	III		Capaz East Central School SPED Center	611	488,800.00
2	III	Tarlac	Paniquit North Central School SPED Center	619	495,200.00
3	III		Camiling Central school SPED Center	602	481,600.00
4	III		Concepcion SPED Center (Mirane ES)	515	412,000.00
5	III	Pampanga	Dau Central School SPED Center	617	493,600.00
6	III	Angeles City	Angeles City ES SPED Center	612	489,600.00
7	III		Limay Central School SPED Center	614	491,200.00
8	III		Antonio Llamas Central School SPED Center	619	495,200.00
9	III	Bataan	Orani North Central School SPED Center	611	488,800.00
10	III		Dinalupihan ES SPED Center	614	491,200.00
11	III		Orion Central ES SPED Center	617	493,600.00
12	III		Balanga City Central School SPED Center	611	488,800.00
13	III		Kalalake Elem. School - SINAG SPED Center	615	492,000.00
14	III	Olongapo City	SPED Center for the Gifted	614	491,200.00
15	III		Old Cabalan Elem. School SPED Center	606	484,800.00

FY 2014 Support to SPED Centers/Schools - Elementary Level

Region	Division	School ID	School Name	Physical Target	Amount per School (in Php)
16	III	106986	Sta Cruz North ES SPED Center	617	493,600.00
17	III	106979	Don Marcelo C. Marty SPED Center	615	492,000.00
18	III	106841	Candelaria CS SPED Center	601	480,800.00
19	III	106893	Masinloc CS SPED Center	609	487,200.00
20	III	106916	Palauig CES SPED Center	615	492,000.00
21	III	104838	Iba CES SPED Center	607	485,600.00
22	III	106955	San Marcelino CES SPED Center	607	485,600.00
23	III	106856	Castillejos CES SPED Center	604	483,200.00
24	III	107020	Subic CS SPED Center	618	494,400.00
25	III	106513	Josephine F. Khonghun SPED Center	611	488,800.00
26	III	104607	Banban Elem. School SPED Center (Bocaue)	615	492,000.00
27	III	104964	Obando CS SPED Center	610	488,000.00
28	III	104908	Marilao CS SPED Center	616	492,800.00
29	III	104737	Baliuag North CS SPED Center	619	495,200.00
30	III	104801	Calumpit CS SPED Center	615	492,000.00
31	III	104929	Saluysoy ES SPED Center (Meycauayan)	610	488,000.00
32	III	105111	San Miguel CS SPED Center	613	490,400.00
33	III	105144	Cornella M. De Jesus Mem. SPED Ctr. (Sta Maria)	536	428,800.00
34	III	104892	Malolos CES SPED Center	613	490,400.00
35	III	105232	Sta. Isabel ES SPED Center	611	488,800.00
36	III	107107	San Isidro ES SPED Center	608	486,400.00
37	III	105485	San Jose City West CS SPED Center	617	493,600.00
38	III	105806	Talavera CS SPED Center	619	495,200.00
39	III	107064	Cabanatuan East CS SPED Center	504	403,200.00
40	III	104409	Baler Central School SPED Center	528	422,400.00
41	III	107163	San Rafael BBH Elementary School SPED Center	510	408,000.00
42	III	107195	San Fernando City CS SPED Center	525	420,000.00
<b>REGION III TOTAL</b>				<b>25,170</b>	<b>20,136,000.00</b>
1	IV-A	109342	Antipolo City SPED Center (San Isidro ES)	640	512,000.00
2	IV-A	107734	Taal Central School SPED Center	624	499,200.00
3	IV-A	107512	Nasugbu West CS SPED Center	632	505,600.00
4	IV-A	107594	Padre Imo Luma MES SPED Center	635	508,000.00
5	IV-A	109545	Batangas City East ES SPED Center	633	506,400.00
6	IV-A	109817	Jose Rizal Memorial School SPED Center	637	509,600.00
7	IV-A	no sch.I.D. yet	Calamba City SPED Center	533	426,400.00
8	IV-A	108091	Rosario Elementary School SPED Center	626	500,800.00
9	IV-A	107894	Carmona Elem School (BLM) SPED Center	605	484,000.00
10	IV-A	107994	Little Red School SPED Center (Indang CS)	613	490,400.00
11	IV-A	107943	St. Joseph ES SPED Center (Gen. Mariano Alvarez)	576	460,800.00
12	IV-A	107974	Imus Pilot Kaagapay SPED Center	614	491,200.00
13	IV-A	108154	Tagaytay City CS SPED Center	628	502,400.00

**FY 2014 Support to SPED Centers/Schools - Elementary Level**

Region	Division	School ID	School Name	Physical Target	Amount per School (in Php)
14	IV-A	109632	Ladislao Diwa ES SPED Center	614	491,200.00
15	IV-A	109624	Julian Felipe ES SPED Center	635	508,000.00
16	IV-A	109637	Manuel S. Rojas ES SPED Center	561	448,800.00
17	IV-A	109632	Lipa City ES SPED Center	583	466,400.00
18	IV-A	109714	Lucena East VII CS SPED Center	616	492,800.00
19	IV-A	109742	Lucena West I ES SPED Center	606	484,800.00
20	IV-A	107240	Lucban Central School SPED Center	627	501,600.00
21	IV-A	109169	Sariaya East Central School SPED Center	630	504,000.00
22	IV-A	108649	Catanauan Central School SPED Center	589	471,200.00
23	IV-A	108637	Cadelaria Central School SPED Center	593	474,400.00
24	IV-A	108509	Atimonan Central School SPED Center	597	477,600.00
25	IV-A	108759	Gumaca East Central School SPED Center	623	498,400.00
26	IV-A	108911	Mauban South CS SPED Center	637	509,600.00
27	IV-A	108805	Don Emilio Salumbides CS SPED Center	587	469,600.00
28	IV-A	108847	Lopez East Central School SPED Center	594	475,200.00
29	IV-A	109677	Claro M. Recto CS SPED Center (Tiaong)	626	500,800.00
30	IV-A	109369	Cainta Elem. School SPED Center (Cainta I)	632	505,600.00
31	IV-A	109436	Maybangkal ES SPED Center (Morong)	617	493,600.00
32	IV-A	109318	Tayuman ES SPED Center (Binangonan)	629	503,200.00
33	IV-A	109478	San Jose ES SPED Center (Rodriguez I)	614	491,200.00
34	IV-A	168001	Paaralang Pag-ibig at Pag-asa	636	508,800.00
35	IV-A	107781	Tanauan City SPED Center	616	492,800.00
36	IV-A	107921	Dr. Jose Rizal ES SPED Center	612	489,600.00
37	IV-A	108473	Dita ES SPED Center	619	495,200.00
38	IV-A	108446	Sta. Cruz CES SPED Center	621	496,800.00
39	IV-A	108239	Cabuyao Central ES SPED Center	632	505,600.00
40	IV-A	108213	Binan Central Schoo SPED Center	624	499,200.00
41	IV-A	108375	Paete CS SPED Center (Bagong Bayan)	626	500,800.00
42	IV-A	108200	Baey CS Sped Center	633	506,400.00
<b>REGION IV-A TOTAL</b>				<b>25,825</b>	<b>20,660,000.00</b>
1	IV-B	111570	Macario Adriatico Mem. School SPED Center	677	541,600.00
2	IV-B	109870	Don Luis M. Hidalgo ES SPED Center	689	551,200.00
3	IV-B	110282	Caminhawit ES SPED Center	675	540,000.00
4	IV-B	110169	Mamburao Central School SPED Center	690	552,000.00
5	IV-B	110558	Juan Morente Sr. Mem. Pilot School SPED Center	395	316,000.00
6	IV-B	110442	Gloria Central School SPED Center	393	314,400.00
7	IV-B	111136	Andres Soriano Mem. School SPED Center	675	540,000.00
8	IV-B	110866	Brooke's Point Central School SPED Center	698	558,400.00

**FY 2014 Support to SPED Centers/Schools - Elementary Level**

Region	Division	School ID	School Name	Physical Target	Amount per School (in Php)
9	IV-B	Romblon	Romblon East Central School (Romblon Division Speed Center)	391	312,800.00
10	IV-B	Puerto Princesa City	Puerto Princesa City Pilot ES SPED Center	683	546,400.00
<b>REGION IV-B TOTAL</b>				<b>5,966</b>	<b>4,772,800.00</b>
1	V	Albay	Daraga North Central School SPED Center	620	496,000.00
2	V	Camarines Norte	Daet Central School SPED Center	594	475,200.00
3	V	Camarines Sur	Buhí SPED Center	631	504,800.00
4	V		Pili Central School SPED Center	595	476,000.00
5	V	Catanduanes	Jose M. Alberto Mem. ES SPED Center	660	528,000.00
6	V	Iriga City	Iriga City Division Integrated Special School	632	505,600.00
7	V	Legazpi City	Legazpi City Division SPED Center	656	524,800.00
8	V	Masbate City	Jose Zurbito Sr. ES SPED Center	656	524,800.00
9	V		Naga City SPED Center	695	556,000.00
10	V	Naga City	San Rafael ES SPED Center	595	476,000.00
11	V		Bulan South CS SPED Center	628	502,400.00
12	V		Gubat North CS SPED Center	564	451,200.00
13	V	Sorsogon	Irosin Central School	583	466,400.00
14	V	Sorsogon City	Sorsogon East Central School SPED Center	626	500,800.00
15	V	Tabaco City	Tabaco Central School SPED Center	640	512,000.00
<b>REGION V TOTAL</b>				<b>9,375</b>	<b>7,500,000.00</b>
1	VI		Kalibo Integrated SPED Center	487	389,600.00
2	VI		Altavas Central School SPED Center	494	395,200.00
3	VI	Aklan	Numancia Integrated SPED Center	524	419,200.00
4	VI		Banga ES SPED Center	535	428,000.00
5	VI		Kalibo Pilot ES SPED Center	524	419,200.00
6	VI	Antique	Del. Angel Salazar SPED Center	548	438,400.00
7	VI	Bacolod City	Bacolod City SPED Center	563	450,400.00
8	VI	Cadiz City	Cadiz City SPED Training Center	573	458,400.00
9	VI	Iloilo City	Iloilo City Integrated School for Exceptional Children	578	462,400.00
10	VI	La Carlota City	La Carlota North ES SPED Center	528	422,400.00
11	VI	Sagay City	Maria Lopez ES SPED Center	523	418,400.00
12	VI	San Carlos City	San Carlos City Division SPED Center	530	424,000.00
13	VI	Silay City	Silay City SPED Center	527	421,600.00
14	VI	Roxas City	Pres. Manuel Roxas ES SPED Center	543	434,400.00
15	VI		Pontevedra CS SPED Center	533	426,400.00
16	VI	Capiz City	Ivisan ES SPED Center	535	428,000.00
17	VI	Guimaras	San Miguel Central School SPED Center	529	423,200.00

**FY 2014 Support to SPED Centers/Schools - Elementary Level**

Region	Division	School ID	School Name	Physical Target	Amount per School (in Php)
18	VI	116075	Barotac Viejo Central School SPED Center	530	424,000.00
19	VI	116546	Maasin Central School SPED Center	533	426,400.00
20	VI	116043	Barotac Nuevo Central School SPED Center	509	407,200.00
21	VI	116626	Oton CS SPED Center	523	418,400.00
22	VI	116740	San Joaquin CS SPED Center	505	404,000.00
23	VI	116394	Januay Pilot ES SPED Center	510	408,000.00
24	VI	116509	Leon CS SPED Center	513	410,400.00
25	VI	117908	Passi City SPED Center	502	401,600.00
26	VI	117284	Murcia SPED Center	482	385,600.00
27	VI	117840	Esteban R. Abada Mem./School West-SPED Center	478	382,400.00
<b>REGION VI TOTAL</b>				<b>14,159</b>	<b>11,327,200.00</b>
1	VII	120072	Bais City Pilot School SPED Center	482	385,600.00
2	VII	120123	Bayawan City East CS SPED Center	490	392,000.00
3	VII	118485	Loon Central School SPED Center	447	357,600.00
4	VII	118424	Jagna CS SPED Center	459	367,200.00
5	VII	118729	Talibon CS SPED Center	451	360,800.00
6	VII	119018	Balamban Central School SPED Center	459	367,200.00
7	VII	119238	Consolacion CS SPED Center	456	364,800.00
8	VII	119485	Lipata Central School SPED Center	490	392,000.00
9	VII	119650	San Francisco CS SPED Center	495	396,000.00
10	VII	119626	San Fernando CS SPED Center	489	391,200.00
11	VII	119048	Bantayan I CS SPED Center	473	378,400.00
12	VII	119073	Barili I CS SPED Center	485	388,000.00
13	VII	119566	Pinamungahan CS SPED Center	490	392,000.00
14	VII	119509	Naga SPED Center	475	380,000.00
15	VII	119931	Zapatera ES SPED Center	481	384,800.00
16	VII	119754	Labangon ES SPED Center	470	376,000.00
17	VII	119794	Bulacog ES SPED Center	484	387,200.00
18	VII	119915	San Nicolas ES SPED Center	450	360,000.00
19	VII	119158	Carcar City CS SPED Center	478	382,400.00
20	VII	119337	Danao City CS SPED Center	482	385,600.00
21	VII	119939	City West ES SPED Center	451	360,800.00
22	VII	120267	Guinhangan South CS SPED Center	486	388,800.00
23	VII	119989	Lapu-Lapu CS SPED Center	488	390,400.00
24	VII	189001	Mandaue City CS SPED Center	479	383,200.00

FY 2014 Support to SPED Centers/Schools - Elementary Level

Region	Division	School ID	School Name	Physical Target	Amount per School (in Php)
25	VII	120366	Mabinay I CS SPED Center	456	364,800.00
26	VII	120459	Staton East CS SPED Center (Felix Tayco CES)	453	362,400.00
27	VII	120202	Canlaon City SPED Center	463	370,400.00
28	VII	120521	Sta. Catalina North CS SPED Center	461	368,800.00
29	VII	120642	Vallehermoso CS SPED Center	454	363,200.00
30	VII	120604	Tayasan CS SPED Center	484	387,200.00
31	VII	120395	Maniuyod CS SPED Center	477	381,600.00
32	VII	120496	Sibulan CS SPED Center	450	360,000.00
33	VII	119744	Tabunok CS SPED Center	460	368,000.00
34	VII	119791	Talisay City CS SPED Center	452	361,600.00
35	VII	233001	Tagbilaran City CS SPED Center	456	364,800.00
36	VII	120576	Tanjay City SPED Center (Plaza Central School)	464	371,200.00
37	VII	120757	South City Central School SPED Center	450	360,000.00
38	VII	120705	San Juan CS SPED Center	462	369,600.00
<b>REGION VII TOTAL</b>				<b>17,832</b>	<b>14,265,600.00</b>
1	VIII	Baybay City	Baybay North CS SPED Center	688	550,400.00
2	VIII	Borongan City	Eugenio S. Daza Pilot ES SPED Center	668	534,400.00
3	VIII	Biliran	Naval CS SPED Center	680	544,000.00
4	VIII		Caibiran CS SPED Center	676	540,800.00
5	VIII	Calbayog City	Calbayog City SPED Center	693	554,400.00
6	VIII	Catbalogan City	Catbalogan I CS SPED Center	656	524,800.00
7	VIII	Leyte	Dulag SPED Center	685	548,000.00
8	VIII		Palo I Central School SPED Center	676	540,800.00
9	VIII	Maasin City	Maasin City SPED Center	686	548,800.00
10	VIII	Northern Samar	Catarman I CS SPED Center	657	525,600.00
11	VIII	Ormoc City	Ormoc City CS SPED Center	692	553,600.00
12	VIII	Tacloban City	Sio Nino ES SPED Center	686	548,800.00
13	VIII		Sogod CS SPED Center	668	534,400.00
14	VIII	Southern Leyte	San Juan CS SPED Center	634	507,200.00
15	VIII		Macrohon Central ES (District SPED Center)	592	473,600.00
16	VIII	Eastern Samar	Oras East Central School (District SPED Center)	588	470,400.00
<b>REGION VIII TOTAL</b>				<b>10,625</b>	<b>8,500,000.00</b>
1	IX	Dapitan City	Dapitan City CS SPED Center	565	452,000.00
2	IX	Dipolog City	Dipolog City SPED Center	570	456,000.00
3	IX	Pagadian City	Pagadian City SPED Center	543	434,400.00

**FY 2014 Support to SPED Centers/Schools - Elementary Level**

Region	Division	School ID	School Name	Physical Target	Amount per School (in Php)
4	IX	126229	Tertuan ES SPED Center	532	425,600.00
5	IX	126220	Sta. Maria Elementary School SPED Center	542	433,600.00
6	IX	126261	Zamboanga East Elem. School SPED Center	541	432,800.00
7	IX	126108	Baliwasan CS SPED Center	536	428,800.00
8	IX	126113	Southcom CS SPED Center	539	431,200.00
9	IX	126097	Ayala SPED Center	521	416,800.00
10	IX	126221	Catalina Yda De Jalon Mem. School SPED Ctr.	448	358,400.00
11	IX	195535	Sindangan Pilot SPED Center	537	429,600.00
12	IX	124488	Roxas CS SPED Center	441	352,800.00
13	IX	124369	Katipunan CS SPED Center	438	350,400.00
14	IX	196021	Aurora Regional Pilot SPED Center	539	431,200.00
15	IX	196010	Molave RPS SPED Center	533	426,400.00
16	IX	196023	Mahayag Central School SPED Center	534	427,200.00
17	IX	124899	Monte Alegre CS SPED Center	526	420,800.00
18	IX	196022	Dumungag Central School SPED Center	535	428,000.00
19	IX	196026	Tukuran SPED Center	453	362,400.00
20	IX	196521	Bug CS SPED Center	535	428,000.00
21	IX	196519	Ipil CS SPED Center	540	432,000.00
22	IX	196518	Kabasalan Central School SPED Center	537	429,600.00
23	IX	196520	Malangas CS SPED Center	532	425,600.00
24	IX	196522	Titay CS SPED Center	536	428,800.00
25	IX	125721	Naga CES SPED Center	540	432,000.00
26	IX	125804	Surabay CS SPED Center	528	422,400.00
27	IX	126002	Isabela City Pilot CS SPED Center	520	416,000.00
28	IX	126001	Isabela East CS SPED Center	459	367,200.00
<b>REGION IX TOTAL</b>				<b>14,600</b>	<b>11,680,000.00</b>
1	X	126826	Talakag Central School SPED Center	597	477,600.00
2	X	126638	Manolo Fortich CS SPED Center	575	460,000.00
3	X	126344	Don Carlos CS SPED Center	558	446,400.00
4	X	127940	City Central School SPED Center	599	479,200.00
5	X	126914	Mambajao CS SPED Center	585	468,000.00
6	X	128050	Don Restituto Baol CS SPED Center	579	463,200.00
7	X	128091	Iligan City SPED Center	589	471,200.00
8	X	127086	Maranding CS SPED Center	573	458,400.00
9	X	126586	Malaybalay CS SPED Center	559	447,200.00
10	X	127503	Plaridel CS SPED Center	579	463,200.00
11	X	127909	Vicente N. Chavez Mem. School SPED Center	586	468,800.00
12	X	127602	Balingasag CS SPED Center	576	460,800.00
13	X	127437	Oroquieta CS SPED Center	583	466,400.00
14	X	203508	Ozamis City CS SPED Center	579	463,200.00

**FY 2014 Support to SPED Centers/Schools - Elementary Level**

Region	Division	School ID	School Name	Physical Target	Amount per School (in Php)
15	X	Tangub City	Tangub City CS SPED Center	582	465,600.00
16	X	Valencia City	Valencia City CS SPED Center	590	472,000.00
<b>REGION X TOTAL</b>				<b>9,289</b>	<b>7,431,200.00</b>
1	XI		Nabunturan CS SPED Center	645	516,000.00
2	XI		Mawab CS SPED Center	657	525,600.00
3	XI	Compostela Valley	Kingking CS SPED Center	675	540,000.00
4	XI		Compostela CS SPED Center	679	543,200.00
5	XI		Maragusan CS SPED Center	681	544,800.00
6	XI		Laak CS SPED Center	612	489,600.00
7	XI		Davao City Special School	673	538,400.00
8	XI		Francisco Bangoy CS SPED Center	661	528,800.00
9	XI		Tugbok CS SPED Center	679	543,200.00
10	XI	Davao City	Buhangin ES SPED Center	690	552,000.00
11	XI		Malagos Elementary School SPED Center	531	424,800.00
12	XI		Daniel M. Perez Central ES SPED Center	525	420,000.00
13	XI		Maniki ES SPED Center (Kapalong)	687	549,600.00
14	XI	Davao del Norte	Sto. Tomas CS SPED Center	693	554,400.00
15	XI		Carmen CES SPED Center	658	526,400.00
16	XI		Padada CS SPED Center	688	550,400.00
17	XI		Sta. Cruz CS SPED Center	679	543,200.00
18	XI	Davao Del Sur	Magsaysay Central ES SPED Center	529	423,200.00
19	XI		San Isidro ES SPED Center	689	551,200.00
20	XI		Ramon Magsaysay CS SPED Center	680	544,000.00
21	XI		IGACOS	690	552,000.00
22	XI	Mati City	R.R. Mati CS SPED Center	685	548,000.00
23	XI	Panabo City	Panabo CS SPED Center	698	558,400.00
24	XI	Tagum City	Magugpo Pilot Imelda ES SPED Center	681	544,800.00
<b>REGION X TOTAL</b>				<b>15,765</b>	<b>12,612,000.00</b>
1	XII	Cotabato	Midsayap Pilot ES SPED Center	674	539,200.00
2	XII		Dilangalen ES SPED Center	631	504,800.00
3	XII		Kabakan Pilot CS SPED Center	571	456,800.00
4	XII		Miang Pilot Elementary School SPED Center	455	364,000.00
5	XII		Apostol Memn. Elementary School SPED Center	462	369,600.00
6	XII	Cotabato City	Pigawayan Central ES SPED Center	451	360,800.00
7	XII		Cotabato Pilot School SPED Center	689	551,200.00
8	XII		Sero ES SPED Center	679	543,200.00
9	XII		Gen. Santos City SPED Center	669	535,200.00
10	XII	Kidapawan City	Kidapawan Pilot School SPED Center	678	542,400.00
11	XII		Lanao CES SPED Center	639	511,200.00



FY 2014 Support to SPED Centers/Schools - Elementary Level

Region	Division	School ID	School Name	Physical Target	Amount per School (in Php)
12	XII	Koronadal City	Koronadal City CS SPED Center	673	538,400.00
13	XII	130418	Alabel CS SPED Center	667	533,600.00
14	XII	130499	Kiamba CS SPED Center	624	499,200.00
15	XII	130613	Malungon CES SPED Center	656	524,800.00
16	XII	130611	Malandag CES SPED Center	663	530,400.00
17	XII	130459	Glan CS SPED Center	546	436,800.00
18	XII	130646	Banga CS SPED Center	669	535,200.00
19	XII	130865	Tampakan SPED Center	661	528,800.00
20	XII	130708	Norralla CS SPED Center	536	428,800.00
21	XII	130783	Surallah CS SPED Center	682	545,600.00
22	XII	130745	Polomolok CS SPED Center	697	557,600.00
23	XII	130721	DOLE Cannery CES SPED Center	466	372,800.00
24	XII	130896	Tupi Central School SPED Center	456	364,800.00
25	XII	131220	Tacurong Pilot CS SPED Center	566	452,800.00
26	XII	131008	Islulan Central School SPED Center	563	450,400.00
<b>REGION XII TOTAL</b>				<b>15,723</b>	<b>12,578,400.00</b>
1	CARAGA	131508	Buenvista Integrated School SPED Center	656	524,800.00
2	CARAGA	131580	Cabadbaran South CS SPED Center	635	508,000.00
3	CARAGA	131450	Kitcharao CS SPED Center	681	544,800.00
4	CARAGA	131504	Talisay ES SPED Center	629	503,200.00
5	CARAGA	212027	San Francisco CS SPED Center	684	547,200.00
6	CARAGA	132019	Trento West CES SPED Center	683	546,400.00
7	CARAGA	131809	Sta. Irene CS SPED Center	681	544,800.00
8	CARAGA	131991	Talacogon CS SPED Center	680	544,000.00
9	CARAGA	132609	Bislig City Division SPED Center	660	528,000.00
10	CARAGA	212502	Butuan City CS SPED Center	654	523,200.00
11	CARAGA	132522	San Jose CS SPED Center	664	531,200.00
12	CARAGA	132139	Dapa CS SPED Center	677	541,600.00
13	CARAGA	132224	Socorro CS SPED Center	682	545,600.00
14	CARAGA	132254	Mariano Espina Mem. School SPED Center	678	542,400.00
15	CARAGA	132534	Sison CS SPED Center	676	540,800.00
16	CARAGA	212021	Bayugan Central Elementary School SPED Center	519	415,200.00
17	CARAGA	214501	Surigao del Sur SPED Center (Tandag)	676	540,800.00
<b>CARAGA TOTAL</b>				<b>11,215</b>	<b>8,972,000.00</b>

**FY 2014 Support to SPED Centers/Schools - Elementary Level**

Region	Division	School ID	School Name	Physical Target	Amount per School (in Php)
1	NCR	136604	Silahis ng Kagitingan, Jose Rizal ES SPED Center	650	520,000.00
2	NCR	136419	Silahis ng Pag-asa, Bo. Obrero ES SPED Center	658	526,400.00
3	NCR	136444	Silahis ng Diwa, M. Hizon ES SPED Center	647	517,600.00
4	NCR	136457	Silahis ng Kagandahan, A. Albert ES SPED Center	636	508,800.00
5	NCR	136452	Silahis ng Kaunlaran, P. Gomez ES SPED Center	664	531,200.00
6	NCR	136467	Silahis ng Pag-ibig, P. Burgos ES SPED Center	649	519,200.00
7	NCR	136473	Silahis ng Ligaya, J. Lukban ES SPED Center	645	516,000.00
8	NCR	136477	Silahis ng Kalihisan, A. Quezon ES SPED Center	652	521,600.00
9	NCR	136485	Silahis ng Tagumpay, Sta. Ana ES SPED Center	657	525,600.00
10	NCR	136589	Silahis ng Katapatan, Rafael Palma ES SPED Center	636	508,800.00
11	NCR	136461	Silahis ng Kapayapaan, Legarda ES SPED Center	649	519,200.00
12	NCR	no sch. I.D.	Silahis ng Kalusugan, Phil. Gen. Hospital SPED Ctr.	524	419,200.00
13	NCR	136475	Silahis ng Katarrungan, Special School	656	524,800.00
14	NCR	136466	Silahis ng Kasaganaan, Fugoso ES SPED Center	650	520,000.00
15	NCR	136534	Lagro ES SPED Center	659	527,200.00
16	NCR	136541	Commonwealth ES SPED Center	653	522,400.00
17	NCR	136560	Batino ES SPED Center	649	519,200.00
18	NCR	136579	Gen. Roxas ES SPED Center	634	507,200.00
19	NCR	136505	San Antonio ES SPED Center	644	515,200.00
20	NCR	136528	Rosa Susano ES SPED Center	654	523,200.00
21	NCR	136548	Payatas B ES SPED Center	639	511,200.00
22	NCR	136547	Melencio M. Castelo Elementary School	647	517,600.00
23	NCR	136542	Dona Juana ES SPED Center	639	511,200.00
24	NCR	136552	Bagumbayan ES SPED Center	633	506,400.00
25	NCR	136557	Cubao ES SPED Center	647	517,600.00
26	NCR	136605	P. Villanueva ES (Pasay City Division SPED Center)	635	508,000.00
27	NCR	136596	Villamor Airbase ES SPED Center	642	513,600.00
28	NCR	223001	Philippine National School for the Blind (PNSB)	529	423,200.00
29	NCR	223002	Philippine School for the Deaf	545	436,000.00
30	NCR	136600	P. Zamora ES SPED Center	648	518,400.00
31	NCR	136756	Paranaque ES SPED Center	637	509,600.00
32	NCR	136753	Fourth Estate ES SPED Center	466	372,800.00
33	NCR	136908	Alabang ES SPED Center	597	477,600.00
34	NCR	136903	Muntinlupa ES SPED Center	588	470,400.00
35	NCR	136905	Soldiers' Hills ES SPED Center	630	504,000.00
36	NCR	136703	Gen. Pio del Pilar ES SPED Center	604	483,200.00
37	NCR	136710	Nemesio Yabut ES SPED Center	476	380,800.00
38	NCR	136695	Pembo ES Sinag ng Pag-asa SPED Center	489	391,200.00
39	NCR	136866	San Roque ES SPED Center	678	542,400.00
40	NCR	136671	Barangka ES SPED Center	638	510,400.00
41	NCR	136680	Concepcion ES SPED Center	486	388,800.00

**FY 2014 Support to SPED Centers/Schools - Elementary Level**

Region	Division	School ID	School Name	Physical Target	Amount per School (in Php)
42	NCR	136616	Bagong Silang ES SPED Center	588	470,400.00
43	NCR	136617	Caloocan Central ES SPED Center	660	528,000.00
44	NCR	136620	Cecilio Apostol ES SPED Center	653	522,400.00
45	NCR	136729	Bagong Ilog ES SPED Center	652	521,600.00
46	NCR	136741	De Castro ES SPED Center	679	543,200.00
47	NCR	136738	San Lorenzo Ruiz ES SPED Center	638	510,400.00
48	NCR	136814	Gen. T. de Leon ES SPED Center	644	515,200.00
49	NCR	136859	Kapitbahayan ES SPED Center	656	524,800.00
50	NCR	136666	E. Rodriguez ES SPED Center	682	545,600.00
51	NCR	136659	Isaac Lopez Integrated School	639	511,200.00
52	NCR	136830	Malabon ES SPED Center	668	534,400.00
53	NCR	136777	Las Pinas ES Central SPED Center	678	542,400.00
54	NCR	136885	Enlisted Men's Signal Village ES	646	516,800.00
55	NCR	136751	Pineglabanan ES SPED Center	480	384,000.00
<b>NCR-CO Total</b>				<b>34,322</b>	<b>27,457,600.00</b>
1	ARMM	Sulu	Jolo SPED Center	798	638,400.00
2	ARMM	Tawi	Bongao SPED Center	787	629,600.00
<b>ARMM-CO Total</b>				<b>1,585</b>	<b>1,268,000.00</b>
<b>GRAND TOTAL</b>				<b>246,621</b>	<b>197,296,800.00</b>

**(Enclosure No. 3b.2 to DepEd Order No. 15, s. 2014)**  
**Support to Secondary Schools with Students with Special Needs**

Region	Division	School ID	School Name	Amount per School (in Php)
1	Ilocos Norte	300002	Bacarra NCHS	86,112.00
2	Ilocos Norte	320804	Batac NHS (Poblacion Campus)	86,112.00
3	Pangasinan I, Lingayen	300168	Bayambang NHS (Bayambang)	86,112.00
4	Pangasinan I, Lingayen	300183	Calasiao Comprehensive NHS	86,112.00
5	Pangasinan I, Lingayen	300193	Daniel Maramba NHS	86,112.00
6	La Union	300114	Dona F. Lacsamana Vda de Ortega MNHS	86,112.00
7	Iloilo City	300373	Iloilo Norte College of Arts & Trades	86,112.00
8	Iloilo City	300374	Iloilo Norte NHS	86,112.00
9	Iloilo City	300052	Iloilo Sur NHS	86,112.00
10	Pangasinan I, Lingayen	300222	Mangatarem NHS	86,112.00
11	Pangasinan I, Lingayen	300225	Matic-Matic NHS	86,112.00
12	Iloilo City	324102	San Fernando City SPED HS	86,112.00
13	Iloilo Sur	300086	Tagudin NHS	86,112.00
14	Urdaneta City	300410	Urdaneta City NHS	86,112.00
			<b>Sub-total, Region I</b>	<b>1,205,568.00</b>
1	Quirino	300652	Aglipay NHS	86,112.00
2	Nueva Vizcaya	300618	Aritaao HS	86,112.00
3	Nueva Vizcaya	300620	Bambang NHS	86,112.00
4	Quirino	300655	Burgos NHS	86,112.00
5	Cauayan City	300516	Cauayan City NHS	86,112.00
6	Quirino	306311	Dibibi IS	86,112.00
7	Quirino	300662	Nagtipunan NHS	86,112.00
8	Isabela	300579	Roxas NHS-Main	86,112.00
9	Santiago City	300599	Santiago City NHS	86,112.00
10	Nueva Vizcaya	300646	Solano HS	86,112.00

**Support to Secondary Schools with Students with Special Needs**

Region	Division	School ID	School Name	Amount per School (in Php)
			<b>Sub-total, Region II</b>	<b>861,120.00</b>
1	Tarlac City	3009444	Alvandia-Aguso HS Main	86,112.00
2	Bataan	300697	B. Camacho NHS	86,112.00
3	Bulacan	306713	Bajet-Castillo HS	86,112.00
4	Pampanga	300879	Basa Air Base HS	86,112.00
5	Balanga City	300702	Bataan NHS	86,112.00
6	Bulacan	300728	Bunsuran NHS	86,112.00
7	Nueva Ecija	300794	Calaba NHS	86,112.00
8	Bulacan	306714	Catmon HS	86,112.00
9	Tarlac City	300960	Central Azucarera de Tarlac NHS Main	86,112.00
10	Balanga City	322901	City of Balanga HS	86,112.00
11	Olongapo City	301051	City of Olongapo NHS	86,112.00
12	Bulacan	300735	Dampol 2nd NHS	86,112.00
13	Tarlac	300962	Dapdap HS	86,112.00
14	Aurora	300693	Dipaculao NHS	86,112.00
15	Nueva Ecija	300802	Doña Juana Chico NHS	86,112.00
16	Bulacan	300739	F. F. Halili Nat'l. Agr'l. School	86,112.00
17	Bulacan	300741	Felizardo C. Lipana MHS (Sta. Rita HS)	86,112.00
18	Angeles City	301040	Francisco G. Nepomuceno Mem. HS	86,112.00
19	Bulacan	300742	Guiguinto Nat'l Voc'l. HS	86,112.00
20	Bulacan	306701	Jaime Vistan HS (Tabang HS)	86,112.00
21	Aurora	300689	Juan C. Angara Memorial NHS	86,112.00
22	Bulacan	300746	Lolomboy National NHS	86,112.00
23	Pampanga	306916	Mabalacat Comm. HS	86,112.00
24	Bulacan	300757	Meycauayan NHS	86,112.00
25	San Jose del Monte City	307501	Muzon HS	86,112.00
26	Olongapo City	301057	New Cabalan NHS	86,112.00
27	Tarlac	300977	O'Donnel HS	86,112.00
28	San Ferrnando City	301064	Pampanga NHS	86,112.00
29	Bulacan	300767	Pulong Buhangin NHS	86,112.00
30	Pampanga	300914	Salapungan NHS - Annex Mandili	86,112.00
31	Bulacan	300745	San Roque National HS	86,112.00

**Support to Secondary Schools with Students with Special Needs**

Region	Division	School ID	School Name	Amount per School (in Php)
III	San Jose del Monte City	301062	Sapang Palay National NHS	86,112.00
III	Bulacan	306726	Sta. Cruz HS	86,112.00
III	Bulacan	300736	Sta. Lucia HS	86,112.00
III	Bulacan	300777	Sta. Maria Agro-Indl. HS	86,112.00
III	Bulacan	300781	Tibagan NHS	86,112.00
III	Zambales	301037	Zambales NHS	86,112.00
			<b>Sub-total, Region III</b>	<b>3,186,144.00</b>
IVA	Quezon	301284	Alabat Island NHS	86,112.00
IVA	Rizal	308126	Ampid NHS	86,112.00
IVA	Lipa City	301486	Anlao NHS	86,112.00
IVA	Antipolo City	321507	Antipolo City SPED Center	86,112.00
IVA	Antipolo City	301418	Antipolo NHS	86,112.00
IVA	Sta. Rosa City	301224	Aplaya NHS	86,112.00
IVA	Cavite	307803	Bacoar NHS - Gawaran Annex	86,112.00
IVA	Cavite	301171	Bacoar NHS - Molino Annex	86,112.00
IVA	Cavite	307815	Bacoar NHS - Villa Maria Annex	86,112.00
IVA	Antipolo City	301419	Bagong Nayon II NHS	86,112.00
IVA	Batangas City	301472	Batangas NHS	86,112.00
IVA	Laguna	307909	Binan Secondary School of Applied Academics (Main Campus)	86,112.00
IVA	Lipa City	301487	Bolbok NHS	86,112.00
IVA	Lipa City	301489	Bulacnin NHS	86,112.00
IVA	Calamba City	301515	Calamba NHS	86,112.00
IVA	Antipolo City	301431	Calawis NHS	86,112.00
IVA	Cavite	301177	Carmona NHS	86,112.00
IVA	Cavite	301169	Constancio E. Aure Sr. NHS (Asis NHS)	86,112.00
IVA	Batangas	301127	Dr. Crisogono B. Ermita Sr. Memorial NHS	86,112.00
IVA	Lipa City	301490	Fernando Air Base NHS	86,112.00
IVA	Cavite	301190	Gen. Emilio Aguinaldo NHS (Imus)	86,112.00
IVA	Rizal	301439	Gen. Licerio Geronimo NHS	86,112.00
IVA	Cavite	301192	Gen. Mariano Alvarez Tech. HS	86,112.00
IVA	Cavite	301194	Gov. Ferrer MNHS (Main)	86,112.00

**Support to Secondary Schools with Students with Special Needs**

Region	Division	School ID	School Name	Amount per School (in Php)	
25	IVA	Cavite	307812	Gov. Ferrer MNHHS (San Francisco Annex)	86,112.00
26	IVA	Rizal	301444	Gov. Isidro Rodriguez, Sr. MNHHS	86,112.00
27	IVA	Cavite	307802	Governor Ferrer Memorial NHS (Buenvista Annex)	86,112.00
28	IVA	Quezon	301325	Gumaca NHS	86,112.00
29	IVA	Rizal	308119	Guronasyon Foundation Incorporated NHS	86,112.00
30	IVA	Quezon	301332	Infanta NHS	86,112.00
31	IVA	Lipa City	301491	Inosloban-Marawoy NHS	86,112.00
32	IVA	Laguna	307901	Jacobo Z. Gonzales Memorial NHS	86,112.00
33	IVA	Laguna	301243	Kabulusan NHS	86,112.00
34	IVA	Cavite	301197	Kaong NHS	86,112.00
35	IVA	Lipa City	301493	Lipa City NHS	86,112.00
36	IVA	Quezon	301345	Lopez National Comprehensive HS	86,112.00
37	IVA	Lipa City	301495	Lumbang NHS	86,112.00
38	IVA	Rizal	308105	Mahabang Parang NHS	86,112.00
39	IVA	Cavite	301204	Maragondon NHS	86,112.00
40	IVA	Antipolo City	301450	Maximo L. Gatlabayan Memorial NHS	86,112.00
41	IVA	Antipolo City	301422	Mayamot NHS	86,112.00
42	IVA	Cavite	307813	Munting Ilog NHS (Siliang West Annex)	86,112.00
43	IVA	Dasmariñas City	301181	New Era NHS	86,112.00
44	IVA	San Pablo City	308604	Paaralang Pag-ibig at Pag-asa (attached to Elem SPED)	86,112.00
45	IVA	Quezon	301364	Paaralang Sek. Ng Lukban	86,112.00
46	IVA	Laguna	301256	Pacta Complex NHS	86,112.00
47	IVA	Batangas	301129	Padre Garcia NHS	86,112.00
48	IVA	Laguna	301257	Pedro Guevara MNHHS	86,112.00
49	IVA	Lipa City	301496	Pinagkawitan NHS	86,112.00
50	IVA	Lipa City	301497	Pinagtongulan NHS	86,112.00
51	IVA	Laguna	301259	Pulo NHS	86,112.00
52	IVA	Quezon	301502	Quezon NHS	86,112.00
53	IVA	Laguna	307931	Saint Francis NHS	86,112.00
54	IVA	Lipa City	301499	San Celestino NHS	86,112.00
55	IVA	Rizal	308106	San Isidro NHS	86,112.00
56	IVA	Lipa City	301500	San Isidro NHS (Formerly Sapac NHS)	86,112.00

**Support to Secondary Schools with Students with Special Needs**

Region	Division	School ID	School Name	Amount per School (in Php)
57	IVA	Cavite	301213 San Jose Community HS	86,112.00
58	IVA	Antipolo City	301457 San Jose NHS	86,112.00
59	IVA	Laguna	307914 San Pedro Relocation CHS - Landayan Annex	86,112.00
60	IVA	Laguna	307908 San Pedro Relocation CHS -(Cuyab Annex)	86,112.00
61	IVA	Barangas	301146 Santa Anastacia-San Rafael NHS	86,112.00
62	IVA	Barangas	301147 Santa Clara NHS	86,112.00
63	IVA	Cavite	301214 Santiago NHS	86,112.00
64	IVA	Cavite	301222 Trece Martires City NHS	86,112.00
65	IVA	Quezon	301412 Ungos NHS	86,112.00
			<b>Sub-total, Region IVA</b>	<b>5,597,280.00</b>
1	IVB	Oriental Mindoro	309008 Baco NHS - Dulangan II Annex	86,112.00
2	IVB	Oriental Mindoro	301617 Balugo NHS	86,112.00
3	IVB	Romblon	309201 Calatrava NHS	86,112.00
4	IVB	Calapan City	301798 Canubing NHS	86,112.00
5	IVB	Palawan	309103 Central Taytay NHS	86,112.00
6	IVB	Palawan	301684 Coron SOF	86,112.00
7	IVB	Oriental Mindoro	301631 Fe del Mundo NHS	86,112.00
8	IVB	Oriental Mindoro	301633 Kaligtasan NHS	86,112.00
9	IVB	Palawan	301703 Liminangcong NHS	86,112.00
10	IVB	Oriental Mindoro	301645 Naujan Municipal NHS	86,112.00
11	IVB	Palawan	301725 Pulot NHS	86,112.00
12	IVB	Palawan	301726 Quezon NHS	86,112.00
13	IVB	Palawan	301731 Roxas National Comprehensive HS	86,112.00
14	IVB	Occidental Mindoro	301596 Sablayan NCHS	86,112.00
15	IVB	Occidental Mindoro	308901 San Jose National Agricultural and Industrial HS	86,112.00
16	IVB	Occidental Mindoro	301599 San Jose NHS	86,112.00



**Support to Secondary Schools with Students with Special Needs**

Region	Division	School ID	School Name	Amount per School (in Php)
IVB	Occidental Mindoro	301603	Santa Cruz NHS	86,112.00
IVB	Oriental Mindoro	301654	Vicente B. Ylagan NHS	86,112.00
			<b>Sub-total, Region IVB</b>	<b>1,550,016.00</b>
V	Sorsogon	302179	Abucay NHS	86,112.00
V	Albay	301808	Anislag NHS	86,112.00
V	Masbate	302111	Aroroy NHS	86,112.00
V	Legaspi City	302257	Banquerohan NHS	86,112.00
V	Camarines Sur	301952	Calabanga NHS	86,112.00
V	Masbate	302129	Catangaan NHS	86,112.00
V	Camarines Sur	301969	Don Servillano Platon Memorial NHS	86,112.00
V	Sorsogon	302213	Gate NHS	86,112.00
V	Sorsogon	302214	Gubat NHS	86,112.00
V	Iriga City	310102	Iriga City Division Integrated Special School (SPED)	86,112.00
V	Camarines Norte	301898	Jose Panganiban NHS	86,112.00
V	Ligao City	301837	Ligao NHS	86,112.00
V	Sorsogon	302230	Pilar National Comprehensive HS	86,112.00
V	Camarines Sur	302038	San Rafael NHS	86,112.00
V	Camarines Sur	302047	Sipocot NHS	86,112.00
V	Sorsogon City	302279	Sorsogon NHS	86,112.00
V	Legaspi City	310203	SPED Center	86,112.00
V	Albay	301879	Sto. Domingo NHS	86,112.00
V	Naga City	310301	Tinago NHS	86,112.00
V	Iriga City	302253	Zeferino Arroyo HS	86,112.00
			<b>Sub-total, Region V</b>	<b>1,722,240.00</b>
VI	Iloilo	302445	Alejandro Firmeza MNHS	86,112.00
VI	Bacolod City	302701	Bacolod City NHS	86,112.00
VI	Iloilo	302473	Cabatuan NCHS	86,112.00

**Support to Secondary Schools with Students with Special Needs**

<b>Region</b>	<b>Division</b>	<b>School ID</b>	<b>School Name</b>	<b>Amount per School (in Php)</b>
4	VI Aklan	302301	Camanci NHS	86,112.00
5	VI Capiz	302391	Capiz NHS	86,112.00
6	VI Negros Occidental	302614	Culipapa NHS	86,112.00
7	VI Bacolod City	302706	Emiliano Lizares NHS	86,112.00
8	VI Negros Occidental	302622	Enrique B. Magalona NHS - Consing Ext.	86,112.00
9	VI Negros Occidental	302624	Enriqueta Montilla De Esteban MHS	86,112.00
10	VI Iloilo City	302737	Fort San Pedro NHS	86,112.00
11	VI Bacolod City	302712	Hardumanan NHS	86,112.00
12	VI Negros Occidental	302651	Hinigaran NHS	86,112.00
13	VI Negros Occidental	302653	Isabela NHS	86,112.00
14	VI San Carlos City	302775	Julio Ledesma NHS	86,112.00
15	VI Kabankalan City	302789	Kabankalan NHS	86,112.00
16	VI La Carlota City	311601	La Carlota City SPED Integrated School	86,112.00
17	VI Negros Occidental	302656	La Castellana NHS	86,112.00
18	VI Negros Occidental	302659	Lopez Jaena NHS	86,112.00
19	VI Bacolod City	302709	Luis Hervas NHS	86,112.00
20	VI Bacolod City	311201	M. G. Medalla Integrated School	86,112.00
21	VI Bacolod City	302714	Mansilingan Agro-Ind. HS	86,112.00
22	VI Negros Occidental	302670	Murcia NHS	86,112.00
23	VI Guimaras	302434	Nueva Valencia NHS	86,112.00
24	VI Iloilo	302550	Pavia NHS	86,112.00
25	VI Negros Occidental	302678	Rafael B. Lacson NHS	86,112.00
26	VI Sagay City	302767	Sagay NHS	86,112.00

**Support to Secondary Schools with Students with Special Needs**

Region	Division	School ID	School Name	Amount per School (in Php)
27	VI	Silay City	Silay SPED Center	86,112.00
28	VI	Iloilo City	SPED-Integrated School for Exceptional Children	86,112.00
29	VI	Iloilo	Zarraga NHS	86,112.00
			<b>Sub-total, Region VI</b>	<b>2,497,248.00</b>
1	VII	Cebu City	Abellana NHS (Day & Night)	86,112.00
2	VII	Bohol	Camabugan NHS	86,112.00
3	VII	Cebu	Carmen NHS-Day	86,112.00
4	VII	Cebu City	Don Sergio Osmeña, Sr. Memorial HS (Day & Night)	86,112.00
5	VII	Tagbilaran City	Dr. Cecilio Putong NHS (Bohol NHS)	86,112.00
6	VII	Cebu City	First HS for the Hearing Impaired	86,112.00
7	VII	Carcar City	Gelacio C. Babao, Sr. MNHS	86,112.00
8	VII	Guhulngan City	Jose B. Cardenas MHS (Cantlaon City NHS)	86,112.00
9	VII	Cebu	Lamac NHS	86,112.00
10	VII	Cebu	Lipata NHS	86,112.00
11	VII	Negros Oriental	Maglinao NHS	86,112.00
12	VII	Mandaue City	Mandaue City Comprehensive NHS	86,112.00
13	VII	Mandaue City	Mandaue SPED Center HS	86,112.00
14	VII	Negros Oriental	Negros Oriental NHS	86,112.00
15	VII	Bohol	Pandanon HS	86,112.00
16	VII	Negros Oriental	Paniabonan HS	86,112.00
17	VII	Cebu City	Pasil NHS (Night)	86,112.00
18	VII	Cebu	Sibonga NHS	86,112.00
19	VII	Negros Oriental	Sibulan NHS	86,112.00
20	VII	Negros Oriental	Sta. Catalina NHS	86,112.00
21	VII	Lapu-Lapu City	Sta. Rosa NHS	86,112.00

**Support to Secondary Schools with Students with Special Needs**

Region	Division	School ID	School Name	Amount per School (in Php)
22	VII	Tagbilaran City	Tagbilaran HS for the Hearing Impaired	86,112.00
23	VII	Cebu City	Talamban NHS (Day & Night)	86,112.00
24	VII	Cebu City	Zapatera NHS (Day & Night)	86,112.00
25	VII	Bohol	Zosimo A. Gulle Memorial National High School	86,112.00
			<b>Sub-total, Region VII</b>	<b>2,152,800.00</b>
1	VIII	Northern Samar	BIRI NHS	86,112.00
2	VIII	Leyte	Buraucn CNHS	86,112.00
3	VIII	Eastern Samar	Dolores NHS	86,112.00
4	VIII	Northern Samar	Gamay NHS	86,112.00
5	VIII	Taloban City	Leyte NHS	86,112.00
6	VIII	Samar (Western Samar)	Sto. Nino NHS	86,112.00
7	VIII	Northern Samar	Sumoroy Agro-Industrial School	86,112.00
			<b>Sub-total, Region VIII</b>	<b>602,784.00</b>
1	IX	Zamboanga Sibugay	Ipil NHS	86,112.00
2	IX	Zamboanga del Sur	Kumalarang NHS	86,112.00
3	IX	Zamboanga City	Maria Clara L. Lobregat NHS	86,112.00
4	IX	Dipolog City	Punta NHS	86,112.00
5	IX	Zamboanga Sibugay	Surabay NHS	86,112.00
			<b>Sub-total, Region IX</b>	<b>430,560.00</b>
1	X	Cagayan de Oro City	Bugo NHS	86,112.00
2	X	Malaybalay City	Bukidnon NHS	86,112.00
3	X	Malaybalay City	Bukidnon NHS - Annex Aglayan	86,112.00

**Support to Secondary Schools with Students with Special Needs**

Region	Division	School ID	School Name	Amount per School (in Php)
4	X	Bukidnon	Bukidnon NSHI	86,112.00
5	X	Cagayan de Oro City	Bulua NHS	86,112.00
6	X	Misamis Oriental	Cabalanitan NHS	86,112.00
7	X	Cagayan de Oro City	Cagayan de Oro NHS	86,112.00
8	X	Cagayan de Oro City	Cagayan de Oro NHS - Balulang Annex	86,112.00
9	X	Bukidnon	Kalilangan NHS	86,112.00
10	X	Lanao del Norte	Lala NHS	86,112.00
11	X	Bukidnon	Lantapan NHS	86,112.00
12	X	Bukidnon	Manolo Fortich NHS	86,112.00
13	X	Bukidnon	New Nongnongan NHS	86,112.00
14	X	Misamis Oriental	Opol NSTS	86,112.00
15	X	Bukidnon	Pangantucan NHS	86,112.00
16	X	Cagayan de Oro City	Puerto NHS	86,112.00
17	X	Malaybalay City	San Martin Agro-Industrial NHS	86,112.00
18	X	Valencia City	Valencia NHS	86,112.00
			<b>Sub-total, Region X</b>	<b>1,550,016.00</b>
1	XI	Compostela Valley	Andli NHS	86,112.00
2	XI	Compostela Valley	Anibongan NHS	86,112.00
3	XI	Davao del Sur	Bato NHS	86,112.00
4	XI	Davao City	Bernardino B. Bosque NHS	86,112.00
5	XI	Davao del Norte	Carmen NHS	86,112.00
6	XI	Davao City	Davao City Special NHS	86,112.00

**Support to Secondary Schools with Students with Special Needs**

Region	Division	School ID	School Name	Amount per School (in Php)
7	XI Davao Oriental	316102	Del Pilar NHS	86,112.00
8	XI Digos City	304400	Digos City NHS (Davao Del Sur NHS)	86,112.00
9	XI Davao City	304361	Dona Carmen Denia NHS	86,112.00
10	XI Davao del Norte	304362	Dona Carmen Denia NHS - J. V. Ferriols HS	86,112.00
11	XI Davao City	304367	Dr. Santiago Dakudao Sr. Nat'l HS	86,112.00
12	XI Davao City	304366	F. Bangoy NHS	86,112.00
13	XI Davao del Sur	304277	Ihan NHS	86,112.00
14	XI Davao del Sur	304278	Inawayan NHS	86,112.00
15	XI Davao City	304377	JESUS J. SORIANO NHS	86,112.00
16	XI Compostela Valley	304189	Laak NHS	86,112.00
17	XI Davao del Sur	304284	Lower Bala NHS	86,112.00
18	XI Island Garden City of Samal	304245	Mambago-B NHS	86,112.00
19	XI Davao del Sur	304288	Matanao NHS	86,112.00
20	XI Mati City	304325	Mati NCHS	86,112.00
21	XI Compostela Valley	304205	Nabunturan NCHS	86,112.00
22	XI Davao del Norte	304254	Sto Tomas NHS	86,112.00
23	XI Davao del Sur	304298	Tacul Agr' L VHS (Tacul NHS)	86,112.00
1	XII Cotabato City	304629	Cotabato City NHS - Rojas #13	86,112.00
2	XII North Cotabato	304432	Dilangalen NHS	86,112.00
3	XII General Santos City	304641	Fatima NHS	86,112.00
<b>Sub-total, Region XI</b>				<b>1,980,576.00</b>

**Support to Secondary Schools with Students with Special Needs**

Region	Division	School ID	School Name	Amount per School (in Php)
4	XII General Santos City	317001	GSC SPED Integrated School	86,112.00
5	XII North Cotabato	304458	Kitub-Bao NHS	86,112.00
6	XII North Cotabato	304461	Libungan NHS	86,112.00
7	XII North Cotabato	304480	Mlang NHS	86,112.00
8	XII Sarangani	304534	Malalag NHS	86,112.00
9	XII Sultan Kudarat	304608	Malgaya NHS	86,112.00
10	XII Cotabato City	304634	Notre Dame Village NHS	86,112.00
11	XII South Cotabato	304560	Polomolok NHS	86,112.00
12	XII South Cotabato	304567	Sitway 8 NHS	86,112.00
13	XII South Cotabato	304575	Tupi NHS	86,112.00
			<b>Sub-total, Region XII</b>	<b>1,119,456.00</b>
1	CARAGA Agusan del Sur	304703	Agusan del Sur NHS	86,112.00
2	CARAGA Butuan City	304756	Agusan NHS	86,112.00
3	CARAGA Surigao del Sur	304861	BAROBO NHS	86,112.00
4	CARAGA Surigao del Norte	304820	Claver NHS	86,112.00
5	CARAGA Agusan del Sur	304753	Trento NHS	86,112.00
			<b>Sub-total, CARAGA</b>	<b>430,560.00</b>
1	CAR Baguio City	305269	Baguio City NHS - Main	86,112.00
2	CAR Benguet	305133	Benguet NHS	86,112.00
3	CAR Baguio City	305282	Guisd Valley NHS	86,112.00
4	CAR Baguio City	305280	Irsan NHS	86,112.00
5	CAR Benguet	305151	Lepanto NHS	86,112.00
6	CAR Apayao	305116	Luna NHS Main	86,112.00

**Support to Secondary Schools with Students with Special Needs**

Region	Division	School ID	School Name	Amount per School (in Php)
7	CAR	305281	Pines City NHS - Main	86,112.00
8	CAR	305287	Quezon Hill NHS	86,112.00
9	CAR	305221	Tabuk City NHS	86,112.00
			<b>Sub-total, Region CAR</b>	<b>775,008.00</b>
1	NCR	305381	Bagong Silang HS	86,112.00
2	NCR	305332	Bagong Silangan HS	86,112.00
3	NCR	305459	Bagumbayan NHS	86,112.00
4	NCR	305388	Caloocan HS	86,112.00
5	NCR	305355	Carlos L. Albert HS	86,112.00
6	NCR	305347	Carlos P. Garcia HS	86,112.00
7	NCR	305445	Caruhatan NHS	86,112.00
8	NCR	305331	Commonwealth HS	86,112.00
9	NCR	305437	Dalandanan NHS	86,112.00
10	NCR	305428	Dr. Arcadio Santos NHS - Main	86,112.00
11	NCR	319803	Eulogio Rodriguez Integ. Sch.	86,112.00
12	NCR	305411	Fort Bonifacio HS	86,112.00
13	NCR	320003	Fort Bonifacio HS - Tibagan HS Annex	86,112.00
14	NCR	305443	Gen. T. de Leon NHS	86,112.00
15	NCR	305382	Kalayaan NHS	86,112.00
16	NCR	305353	Krus na Ligas HS	86,112.00
17	NCR	305336	Lagro HS	86,112.00
18	NCR	305430	Las Piñas NHS	86,112.00
19	NCR	305433	Las Piñas North NHS	86,112.00
20	NCR	305406	Makati HS	86,112.00
21	NCR	305410	Makati West HS (Makati Science HS)	86,112.00
22	NCR	305447	Malabon NHS	86,112.00
23	NCR	305311	Manila HS	86,112.00
24	NCR	320602	Maria Asuncion Rodriguez Tiŋga HS	86,112.00



**Support to Secondary Schools with Students with Special Needs**

Region	Division	School ID	School Name	Amount per School (in Php)
25	NCR	Marikina City	305400 Marikina Heights NHS	86,112.00
26	NCR	Parañaque City	305429 Masville NHS	86,112.00
27	NCR	Mandaluyong City	305394 Mataas na Paaralang Neptali A. Gonzales	86,112.00
28	NCR	Pasig City	320102 Nagpayong HS	86,112.00
29	NCR	Quezon City	319506 National Orthopedic Hospital School for Crippled Children	86,112.00
30	NCR	Quezon City	305340 Novaliches HS	86,112.00
31	NCR	Malabon City	305450 Panghulo NHS	86,112.00
32	NCR	Parañaque City	305424 Paramaque NHS Main	86,112.00
33	NCR	Parañaque City	305425 Paramaque NHS - La Huerta Annex	86,112.00
34	NCR	Parañaque City	320201 Paramaque Science HS	86,112.00
35	NCR	Pasay City	305367 Pasay City East HS	86,112.00
36	NCR	Pasay City	319602 Philippine National School for the Blind	86,112.00
37	NCR	Makati City	320001 Pitoغو HS	86,112.00
38	NCR	Valenzuela City	305436 Polo NHS	86,112.00
39	NCR	Taguig	320606 Pres. Diosdado Macapagal HS - Signal VNHS Annex	86,112.00
40	NCR	Quezon City	305350 Quirino HS	86,112.00
41	NCR	Manila	305306 Ramon Magsaysay HS	86,112.00
42	NCR	Pasig City	305414 Sagad HS	86,112.00
43	NCR	Makati City	305408 San Antonio NHS	86,112.00
44	NCR	Pasig City	305419 Santolan HS	86,112.00
45	NCR	Taguig	305463 Signal Village NHS	86,112.00
46	NCR	Parañaque City	320204 Sun Valley NHS	86,112.00
47	NCR	Taguig	320601 Taguig Science HS	86,112.00
48	NCR	Marikina City	305399 Tañong HS	86,112.00
49	NCR	Manila	305291 Tondo HS	86,112.00
<b>Sub-total, NCR</b>				<b>4,219,488.00</b>

**Support to Secondary Schools with Students with Special Needs**

Region	Division	School ID	School Name	Amount per School (in Php)
1	ARMM Lanao del Sur - IB	304958	Balindong NHS	86,112.00
2	ARMM Lanao del Sur - IB	304963	Datu Calaca MNCHS	86,112.00
<b>Sub-total, ARMM</b>				<b>172,224.00</b>
<b>Grand Total</b>				<b>30,053,088.00</b>
<b>349</b>				

**LEGEND:**

- MR Mentally Retarded
- VI Visually Impaired
- HI Hearing Impaired
- OH Orthopedically Handicapped
- MH Multiple Handicapped
- SD Speech Defective

**Enclosure 3. List of Recipients and Allocation per School**

**(Enclosure No. 3c to DepEd Order No. 15, s. 2014)  
Financial Assistance to Regional Science High Schools (RSHSs)**

<b>Region</b>	<b>Division</b>	<b>School ID</b>	<b>Name of School</b>	<b>Amount (in Php)</b>
1	I	300132	Regional Science High School Ma. Cristina East	1,844,000.00
2	II	300610	Regional Science High School Isabela	1,944,000.00
3	III	301058	Regional Science High School Olongapo City	2,162,000.00
4	IV-A	301178	Cavite Science National High School Cavite	2,170,000.00
5	IV-B	301618	Bansud National High School-RSHS Oriental Mindoro	1,694,000.00
6	V	301814	Bicol Regional Science High School Ligao City	1,704,000.00
7	VI	302332	Science Development National High School Aklan	2,574,000.00
8	VII	303169	RTPM - Dumaguete Science High School Dumaguete City	2,114,000.00
9	VIII	303604	Eastern Visayas Regional Science High School Catbalogan City	1,530,000.00
10	IX	303943	Regional Science High School Zamboanga City	1,810,000.00
11	X	304114	Gusa National High School Gusa Cagayan de Oro City	2,400,000.00
12	XI	304328	Davao Oriental Regional Science High School* Mati City	1,688,000.00
13	XII	304517	Alabel National Science High School Sarangani City	1,924,000.00
14	CARAGA	304794	CARAGA Regional Science High School Surigao City	2,088,000.00
15	ARMM	305015	ARMM Regional High School <i>(Mother school: Amir Bara Lidasan National High School)</i>	1,634,000.00
16	CAR	305140	Cordillera Regional Science High School Benguet	1,606,000.00
17	NCR	305329	Quezon City Science High School Quezon City	3,564,000.00
			<b>TOTAL</b>	<b>34,450,000.00</b>

\* Formerly Gov. Leopoldo Lopez Memorial Science High School.

(Enclosure No. 3d to DepEd Order No. 15, s. 2014)

**Support to Science, Technology and Engineering High Schools (STE, formerly ESEP)**

Region	Division	School ID	Name of School	Amount per School (in Php)
1	I	San Fernando City 300118	La Union National High School	268,000.00
2	I	Pangasinan II, Binalonan 300307	Juan G. Macaraeg NHS (formerly Binalonan NHS)	268,000.00
3	I	Pangasinan I, Lingayen 300233	Pangasinan National High School	268,000.00
4	I	Laoag City 300374	Ilocos Norte National High School	268,000.00
5	I	Vigan City 300052	Ilocos Sur National High School	268,000.00
6	I	Ilocos Norte 300029	Sarrat National High School	268,000.00
7	I	Ilocos Sur 300080	Simait National High School	268,000.00
8	I	Urdaneta City 300410	Urdaneta National High School	268,000.00
9	I	Dagupan City 300368	Dagupan City National HS	268,000.00
10	I	San Carlos City 300391	Turac National High School	268,000.00
11	I	Alaminos City 300155	Alaminos City National High School	268,000.00
12	I	Candon City 300044	Candon National High School	268,000.00
13	I	Ilocos Norte 300005	Batac National High School	268,000.00
			<b>Sub-total, I</b>	<b>3,484,000.00</b>
1	II	Cagayan 300419	Abulug School of Fisheries	268,000.00
2	II	Tuguegarao City 300668	Cagayan National High School	268,000.00
3	II	Cagayan 300444	Camalanguan High School	268,000.00
4	II	Isabela 300530	Dona Aurora High School	268,000.00
5	II	Isabela 300542	Isabela National High School	268,000.00
6	II	Nueva Vizcaya 300635	Dupax del Norte NHS (formerly Lamo NHS)	268,000.00
7	II	Isabela 300558	Luna High School	268,000.00
8	II	Nueva Vizcaya 300641	Nueva Vizcaya Gen Comp High School	268,000.00
9	II	Quirino 300664	Quirino General High School	268,000.00
10	II	Isabela 300591	San Isidro National High School	268,000.00
11	II	Batanes 300411	Batanes National Science HS	268,000.00
12	II	Cauayan City 300516	Cauayan City National High School	268,000.00
13	II	Santiago City 300599	Santiago City National High School	268,000.00
			<b>Sub-total, II</b>	<b>3,484,000.00</b>
1	III	Angeles City 301039	Angeles City High School	268,000.00
2	III	Balanga City 300702	Bataan National High School	268,000.00
3	III	Gapan City 300812	J.R. Liwag Mem High School	268,000.00
4	III	Malolos City 300751	M.H. del Pilar High School	268,000.00
5	III	Olongapo City 301051	Olongapo City National High School	268,000.00

**Support to Science, Technology and Engineering High Schools (STE, formerly ESEP)**

Region	Division	School ID	Name of School	Amount per School (in Php)	
6	III	San Fernando City	301064	Pampanga High School	268,000.00
7	III	Nueva Ecija	300864	Talavera National High School	268,000.00
8	III	Tarlac	300996	Tarlac National High School	268,000.00
9	III	Aurora	300677	Baler National High School	268,000.00
10	III	Bulacan	300771	San Miguel National High School	268,000.00
11	III	Cabarnatuan City	301045	Camp Tinio National High School	268,000.00
12	III	Pampanga	300900	Mauaque High School	268,000.00
13	III	Tarlac City	300971	Maliwalo National High School	268,000.00
14	III	Zambales	301037	Zambales National High School	268,000.00
15	III	Bataan	300707	Limay National High School	268,000.00
16	III	San Jose del Monte City	301062	Sapang Palay National High School	268,000.00
17	III	Muñoz Science City	300824	Munoz National High School	268,000.00
			<b>Sub-total, III</b>	<b>4,556,000.00</b>	
1	IV-A	Batangas City	301472	Batangas National High School	268,000.00
2	IV-A	Cavite	301175	Bucal National High School	268,000.00
3	IV-A	Lipa City	301492	Lipa City Science High School	268,000.00
4	IV-A	Laguna	307906	Felicesimo T. San Luis NHS (P.Guevarra MHS)	268,000.00
5	IV-A	Quezon	301502	Quezon National High School	268,000.00
6	IV-A	Sta. Rosa City	307902	Sta. Rosa Science and Technology HS	268,000.00
7	IV-A	Laguna	301256	Pacita Complex National High School	268,000.00
8	IV-A	Batangas	301067	Alalum National High School	268,000.00
9	IV-A	Cavite City	301484	Cavite National High School	268,000.00
10	IV-A	Lucena City	308503	Gulang-gulang National High School	268,000.00
11	IV-A	San Pablo City	308605	San Pablo City Science National HS	268,000.00
12	IV-A	Rizal	301456	Piliia National High School	268,000.00
13	IV-A	Calamba City	301519	Looc National High School	268,000.00
14	IV-A	Tanauan City	321601	Tanauan City National High School	268,000.00
15	IV-A	Antipolo City	301457	San Jose National High School	268,000.00
			<b>Total, IVA</b>	<b>4,020,000.00</b>	
1	IV-B	Calapan City	301800	J.Leido Jr. Memorial High School	268,000.00
2	IV-B	Romblon	301765	Looc National High School	268,000.00
3	IV-B	Marinduque	301548	Landy National High School	268,000.00
4	IV-B	Occidental Mindoro	301596	Sablayan National High School	268,000.00

**Support to Science, Technology and Engineering High Schools (STE, formerly ESSEP)**

Region	Division	School ID	Name of School	Amount per School (in Php)	
5	IV-B	Palawan	301710	Narra National High School	268,000.00
6	IV-B	Puerto Princesa City	309301	Palawan National High School	268,000.00
7	IV-B	Oriental Mindoro	301627	Domingo Yu Chu National HS	268,000.00
				<b>Sub-total, IVB</b>	<b>1,876,000.00</b>
1	V	Naga City	302264	Camarines Sur National High School	268,000.00
2	V	Catanduanes	302083	Catanduanes National High School	268,000.00
3	V	Sorsogon	302212	Gallanosa National High School	268,000.00
4	V	Camarines Norte	301898	J. Panganiiban National High School	268,000.00
5	V	Albay	301849	M.O. Ranola Mem High School	268,000.00
6	V	Masbate City	302148	Masbate National Comp High School	268,000.00
7	V	Camarines Sur	302001	Nabua National High School	268,000.00
8	V	Camarines Sur	302016	Pili National High School	268,000.00
9	V	Albay	301865	Polangui General Comprehensive High School	268,000.00
10	V	Sorsogon City	302279	Sorsogon National High School	268,000.00
11	V	Tabaco City	302285	Tabaco National High School	268,000.00
12	V	Camarines Norte	301925	Vinzons Pilot High School	268,000.00
13	V	Naga City	302268	Naga City Science High School	268,000.00
14	V	Iriga City	302253	Zeferino Arroyo High School	268,000.00
15	V	Legaspi City	310202	Legaspi City High School	268,000.00
16	V	Masbate	302111	Aroroy National High School	268,000.00
17	V	Ligao City	301837	Ligao National High School	268,000.00
				<b>Sub-total, V</b>	<b>4,556,000.00</b>
1	VI	Antique	302341	Antique National High School	268,000.00
2	VI	Bacolod City	302701	Bacolod City National High School	268,000.00
3	VI	Iloilo City	302743	Cabatuan National Comp HS	268,000.00
4	VI	Capiz	302391	Capiz National High School	268,000.00
5	VI	Iloilo	302509	Iloilo National High School	268,000.00
6	VI	Negros Occidental	302669	Negros Occidental High School	268,000.00
7	VI	Iloilo	302550	Pavia National High School	268,000.00
8	VI	Bago City	302719	Ramon Torres National High School	268,000.00
9	VI	Cadiz City	311405	Dr. Vicente F. Gustillo National HS	268,000.00
10	VI	Guimaras	302426	Buenavista National High School	268,000.00
11	VI	Kabankalan City	302791	Talubang National High School	268,000.00

**Support to Science, Technology and Engineering High Schools (STE, formerly ESEP)**

Region	Division	School ID	Name of School	Amount per School (in Php)
12	VI	302751	Dona Hortencia Salas Benedicto NHS	268,000.00
13	VI	302767	Sagay National High School	268,000.00
14	VI	302775	Julio Ledesma National High School	268,000.00
15	VI	302780	Dona Monserrat Lopes National High School	268,000.00
16	VI	302805	Passi National High School	268,000.00
17	VI	302761	Tanque National High School	268,000.00
18	VI	302625	Escalante National High School	268,000.00
			<b>Sub-total, VI</b>	<b>4,824,000.00</b>
1	VII	302921	Badian National High School	268,000.00
2	VII	302945	Buanoy National High School	268,000.00
3	VII	303141	Cebu City National Science HS	268,000.00
4	VII	303199	Mandaue City General Comp HS	268,000.00
5	VII	303065	Naga National High School	268,000.00
6	VII	303087	San Remigio National High School	268,000.00
7	VII	302934	Jovencio N. Masong National HS	268,000.00
8	VII	303066	Ocaña National High School	268,000.00
9	VII	303121	Uling National High School	268,000.00
10	VII	303231	Guihulgan National High School	268,000.00
			<b>Sub-total, VII</b>	<b>2,680,000.00</b>
1	VIII	303336	Alang-alang National High School	268,000.00
2	VIII	303348	Baybay National High School	268,000.00
3	VIII	303499	Dolores National High School	268,000.00
4	VIII	303500	Eastern Samar National Comp HS	268,000.00
5	VIII	303663	Leyte National High School	268,000.00
6	VIII	303658	New Ormoc City National High School	268,000.00
7	VIII	303620	Samar National High School	268,000.00
8	VIII	303331	Naval School of Fisheries	268,000.00
9	VIII	313801	Calbayog City National High School	268,000.00
10	VIII	303535	Bobon School of Philippine Craftsman	268,000.00
11	VIII	303487	Sogod National High School	268,000.00
12	VIII	313401	Maasin National High School	268,000.00
			<b>Sub-total, VIII</b>	<b>3,216,000.00</b>
1	IX	303915	Ayala National High School	268,000.00

**Support to Science, Technology and Engineering High Schools (STE, formerly ESEP)**

Region	Division	School ID	Name of School	Amount per School (in Php)
2	IX	Isabela City	Basilan National High School	268,000.00
3	IX	Zamboanga City	Zamboanga City (Main) NHS	268,000.00
4	IX	Dipolog City	Zamboanga del Norte National HS	268,000.00
5	IX	Pagadian City	Zamboanga del Sur National HS	268,000.00
6	IX	Zamboanga City	Zamboanga City (West) NHS	268,000.00
7	IX	Dapitan City	Dapitan City National High School	268,000.00
8	IX	Zamboanga del Norte	Sindangan National High School	268,000.00
9	IX	Zamboanga del Sur	Molave Tech Voc School	268,000.00
10	IX	Zamboanga Sibugay	Buayan National High School	268,000.00
			<b>Sub-total, IX</b>	<b>2,680,000.00</b>
1	X	Mis	Alubijid National Comp High School	268,000.00
2	X	Malaybalay City	Bukidnon National High School	268,000.00
3	X	Cagayan de Oro City	Cagayan de Oro City High School	268,000.00
4	X	Iligan City	Iligan City National High School	268,000.00
5	X	Iligan City	Iligan City East High School	268,000.00
6	X	Lanao del Norte	Lanao del Norte National Comp HS	268,000.00
7	X	Misamis Oriental	Misamis Oriental Gen Comp HS	268,000.00
8	X	Lanao del Norte	Lala National High School	268,000.00
9	X	Oroquieta City	Misamis Occ National High School	268,000.00
10	X	Ozamis City	Ozamiz City National High School	268,000.00
11	X	Valencia City	Valencia City National High School	268,000.00
12	X	Camiguin	Camiguin National High School	268,000.00
13	X	Gingoog City	Gingoog City National High School	268,000.00
14	X	Misamis Occidental	Clarin National High School	268,000.00
15	X	Tangub City	Tangub City National High School	268,000.00
			<b>Sub-total, X</b>	<b>4,020,000.00</b>
1	XI	Davao City	Daniel R. Aguinaldo National High School	268,000.00
2	XI	Davao City	Davao City National High School	268,000.00
3	XI	Digos City	Digos City National High School	268,000.00
4	XI	Compostela Valley	Nabunturan National Comp HS	268,000.00
5	XI	Tagum City	Tagum City National High School	268,000.00
6	XI	Panabo City	Panabo National High School	268,000.00



**Support to Science, Technology and Engineering High Schools (STE, formerly ESEP)**

Region	Division	School ID	Name of School	Amount per School (in Php)	
7	XI	Island Garden City of Samal	323403	N. Villarica National High School	268,000.00
8	XI	Island Garden City of Samal	304253	Sta. Cruz National High School	268,000.00
9	XI	Davao del Norte	304254	Sto. Tomas National High School	268,000.00
				<b>Sub-total, XI</b>	<b>2,412,000.00</b>
1	XII	General Santos City	304642	General Santos City High School	268,000.00
2	XII	Kidapawan City	304661	Kidapawan City National High School	268,000.00
3	XII	Koronadal City	304671	Koronadal National Comp High School	268,000.00
4	XII	South Cotabato	304557	Norala National High School	268,000.00
5	XII	Sultan Kudarat	304589	Esperanza High School	268,000.00
6	XII	Cotabato City	304629	Cotabato National High School-Rojas	268,000.00
7	XII	North Cotabato	304478	Matalam National High School	268,000.00
8	XII	Tacurong City	304624	Tacurong National High School	268,000.00
				<b>Sub-total, XII</b>	<b>2,144,000.00</b>
1	CARAGA	Surigao del Norte	304847	Surigao del Norte National High School	268,000.00
2	CARAGA	Agusan del Sur	304703	Agusan del Sur National High School	268,000.00
3	CARAGA	Butuan City	304756	Agusan National High School	268,000.00
4	CARAGA	Surigao del Sur	304892	J.Elpa National Comp High School	268,000.00
5	CARAGA	Agusan del Norte	304691	Magallanes National High School	268,000.00
6	CARAGA	Bislig City	304865	Bislig City National High School	268,000.00
7	CARAGA	Dinagat Island	304824	Don Ruben E. Ecleo National HS	268,000.00
8	CARAGA	Siargao	317604	Siargao National High School	268,000.00
				<b>Sub-total, CARAGA</b>	<b>2,144,000.00</b>
1	CAR	Abra	305075	Abra High School	268,000.00
2	CAR	Baguio City	305269	Baguio City High School	268,000.00
3	CAR	Benguet	305155	Mankayan National High School	268,000.00
4	CAR	Mt. Province	305255	Mt. Province Gen Comp High School	268,000.00
5	CAR	Baguio City	305281	Pines City National High School	268,000.00
6	CAR	Ifugao	305183	Lawig National High School	268,000.00
7	CAR	Kalinga	305221	Tabuk National High School	268,000.00
8	CAR	Apayao	305113	Flora National High School	268,000.00
				<b>Sub-total, CAR</b>	<b>2,144,000.00</b>

**Support to Science, Technology and Engineering High Schools (STE, formerly ESEP)**

Region	Division	School ID	Name of School	Amount per School (in Php)
1	NCR	305388	Caloocan High School	268,000.00
2	NCR	305447	Malabon National High School	268,000.00
3	NCR	305358	Ramon Magsaysay High School (Cubao)	268,000.00
4	NCR	305309	M. Araulo High School	268,000.00
5	NCR	305300	C. Arellano High School	268,000.00
6	NCR	305318	Manuel Roxas High School	268,000.00
7	NCR	305468	Muntinlupa National High School	268,000.00
8	NCR	305424	Paranaque National High School	268,000.00
9	NCR	305368	Pasay City West High School	268,000.00
10	NCR	305306	Ramon Magsaysay High School (España)	268,000.00
11	NCR	305315	V. Mapa High School	268,000.00
12	NCR	305413	Rizal High School	268,000.00
13	NCR	305430	Las Pinas High School	268,000.00
14	NCR	320001	Pitogo National High School	268,000.00
15	NCR	305312	Manila Science High School	268,000.00
16	NCR	305394	Mataas na Paaralang Neptali A. Gonzalez	268,000.00
17	NCR	305441	Valenzuela National High School	268,000.00
18	NCR	305405	Sta. Elena High School	268,000.00
			<b>Sub-total, NCR</b>	<b>4,824,000.00</b>
1	ARMM	304939	Lamitan National High School	178,000.00
2	ARMM	305066	Tawi-tawi School of Arts and Trades	178,000.00
			<b>Sub-total, ARMM</b>	<b>356,000.00</b>
200			<b>GRAND TOTAL</b>	<b>53,420,000.00</b>

**(Enclosure No. 3e to DepEd Order No. 15, s. 2014)  
Support to Secondary Schools with Special Program for the Arts (SPA)**

<b>Region</b>	<b>Division</b>	<b>School ID</b>	<b>Name of School</b>	<b>Amount (in Php)</b>
1	I Pangasinan I, Lingayen	3002222	Mangatarem National High School	500,000.00
2	II Cauayan City	300516	Cauayan City National High School	500,000.00
3	III Bulacan	300739	F.F. Halili National Agricultural School	500,000.00
4	IVA Batangas	301077	Batangas Province HS for Culture & Arts	500,000.00
5	IVB Puerto Princesa City	309301	Palawan National School	500,000.00
6	V Camarines Sur	301931	Baao National High School	500,000.00
7	VI Antique	302347	Belison National High School	500,000.00
8	VII Bogo City	325001	City of Bogo Science and Arts Academy	500,000.00
9	VIII Catbalogan City	303620	Samar National School	500,000.00
10	IX Zamboanga del Norte	303728	Sergio Osmeña National High School	500,000.00
11	X Malaybalay City	303950	Bukidnon National High School	500,000.00
12	XI Davao City	304393	Sta. Ana National High School	500,000.00
13	XII Kidapawan City	304661	Kidapawan City National High School	500,000.00
14	CARAGA Agusan del Sur	304707	Bayugan National Comprehensive High School	500,000.00
15	ARMM Basilan	304943	Maluso National High School	500,000.00
16	CAR Benguet	305133	Benguet National High School	500,000.00
17	NCR Muntinlupa City	305470	Pedro E. Diaz High School	500,000.00
			<b>TOTAL</b>	<b>8,500,000.00</b>

**(Enclosure No. 3f to DepEd Order No. 15, s. 2014)  
Support to Secondary Schools with Special Program for the Sports (SPS)**

<b>Region</b>	<b>Division</b>	<b>School ID</b>	<b>Name of School</b>	<b>Amount (in Php)</b>
1	I	Pangasinan I, Lingayen 300233	Pangasinan National High School	500,000.00
2	II	Cagayan 300497	Western Cagayan School of Arts & Trades	500,000.00
3	III	Cabanatuan City 301045	Camp Timio National High School	500,000.00
4	IVA	Quezon 301502	Quezon National High School	500,000.00
5	IVB	Romblon 301770	Romblon National High School	500,000.00
6	V	Albay 301849	Marcial O. Rañola Memorial School	500,000.00
7	VI	Iloilo 302542	Oton National High School	500,000.00
8	VII	Bohol 312333	Tubigon West Central High School	500,000.00
9	VIII	Ormoc City 303658	New Ormoc City National High School	500,000.00
10	IX	Pagadian City 303910	Zamboanga del Sur National High School	500,000.00
11	X	Misamis Oriental 304091	Misamis Oriental General Comprehensive HS	500,000.00
12	XI	Digos City 304400	Digos City National High School	500,000.00
13	XII	Kidapawan City 304661	Kidapawan City National High School	500,000.00
14	CARAGA	Surigao del Norte 304847	Surigao del Norte National High School	500,000.00
15	ARMM	Basilan 304936	Concepcion National High School	500,000.00
16	CAR	Kalinga 305205	Kalinga National High School	500,000.00
17	NCR	Makati City 305411	Fort Bonifacio High School	500,000.00
			<b>TOTAL</b>	<b>8,500,000.00</b>