



Republic of the Philippines  
**Department of Education**

17 FEB 2014

DepEd O R D E R  
No. **8**, s. 2014

**THE 2014 NATIONAL COMPETENCY ASSESSMENT AND CERTIFICATION  
(NATCAC)-DEPED PROGRAM**

To: Undersecretaries  
Assistant Secretaries  
Bureau Directors  
Regional Directors  
Schools Division Superintendents  
All Others Concerned

1. In order to have a standard costing and to systematize the competency assessment of the Strengthened Technical-Vocational Education Program (STVEP) being implemented in technical-vocational schools, the Department of Education (DepEd) adopts and implements the modified Assessment Scheme of the Technical-Vocational Skills Development Authority (TESDA), also known as the *National Competency Assessment and Certification (NatCAC) Program*. DepEd is implementing the NatCAC-DepEd Program with a special arrangement.
2. This special arrangement between DepEd and TESDA has been piloted in STVEP graduating students of School Year (SY) 2012-2013 and will continue to cover STVEP graduating students who acquired various specializations/qualifications for SY 2013-2014. This special arrangement include tech-voc students who completed other full qualifications under the Senior High School Modeling Program (SHSMP).
3. To provide policy directions and to ensure the smooth implementation of the competency assessment at the field level, using the new scheme, the DepEd through the Technical-Vocational Unit (TVU), Bureau of Secondary Education (BSE) issues the **Guidelines on the Implementation of the 2014 National Competency Assessment and Certification (NatCAC)-DepEd Program** with the NatCAC-DepEd Flowchart contained in Enclosure No. 1 and the list of beneficiary schools and recipient schools division offices (SDOs) detailed in Enclosure No. 2.
4. The 280 STVEP schools shall be the beneficiaries of this assistance, subject to the enclosed guidelines on the availment, release, utilization, and liquidation of the downloaded funds.
5. Funds for this purpose shall be charged to the Fiscal Year (FY) 2014 Tech-Voc Appropriations, which will be downloaded to the SDOs with tech-voc secondary schools under their jurisdiction.
6. The concerned SDOs will be responsible/accountable for the payment of the assessment fees to the concerned TESDA Accredited Assessment Centers, which cover expenses for the assessor's fee, supplies and materials and other consumables, which will be incurred by some 58,169 students coming from the 280 tech-voc schools during the actual assessment process. Any unspent amount shall be returned to the Bureau of Treasury.

7. For more information, all concerned may contact **Dr. Nelia V. Benito, Director III, National Educational Testing and Research Center**, DepEd Central Office, 2<sup>nd</sup> Floor, Mabini Building, DepEd Complex, Meralco Avenue, Pasig City at telephone no.: (02) 631-6921.
8. Provisions contained in previous issuances inconsistent with this Order are rescinded.
9. Immediate dissemination of and strict compliance with this Order is directed.



**BR. ARMIN A. LUISTRO FSC**  
Secretary

Encl.:

As stated

Reference:

DepEd Order: No. 18, s. 2013

To be indicated in the Perpetual Index  
under the following subjects:

ALLOCATION  
FUNDS  
CERTIFICATION  
POLICY  
PROGRAM  
TECHNICAL EDUCATION  
VOCATIONAL EDUCATION

Madel: Guidelines on NATCAC Version 2  
0018-January 7, 2014/1-9-14/1-10/1-17-14

**GUIDELINES ON THE IMPLEMENTATION OF THE 2014 NATIONAL COMPETENCY ASSESSMENT AND CERTIFICATION (NatCAC)-DepEd PROGRAM**

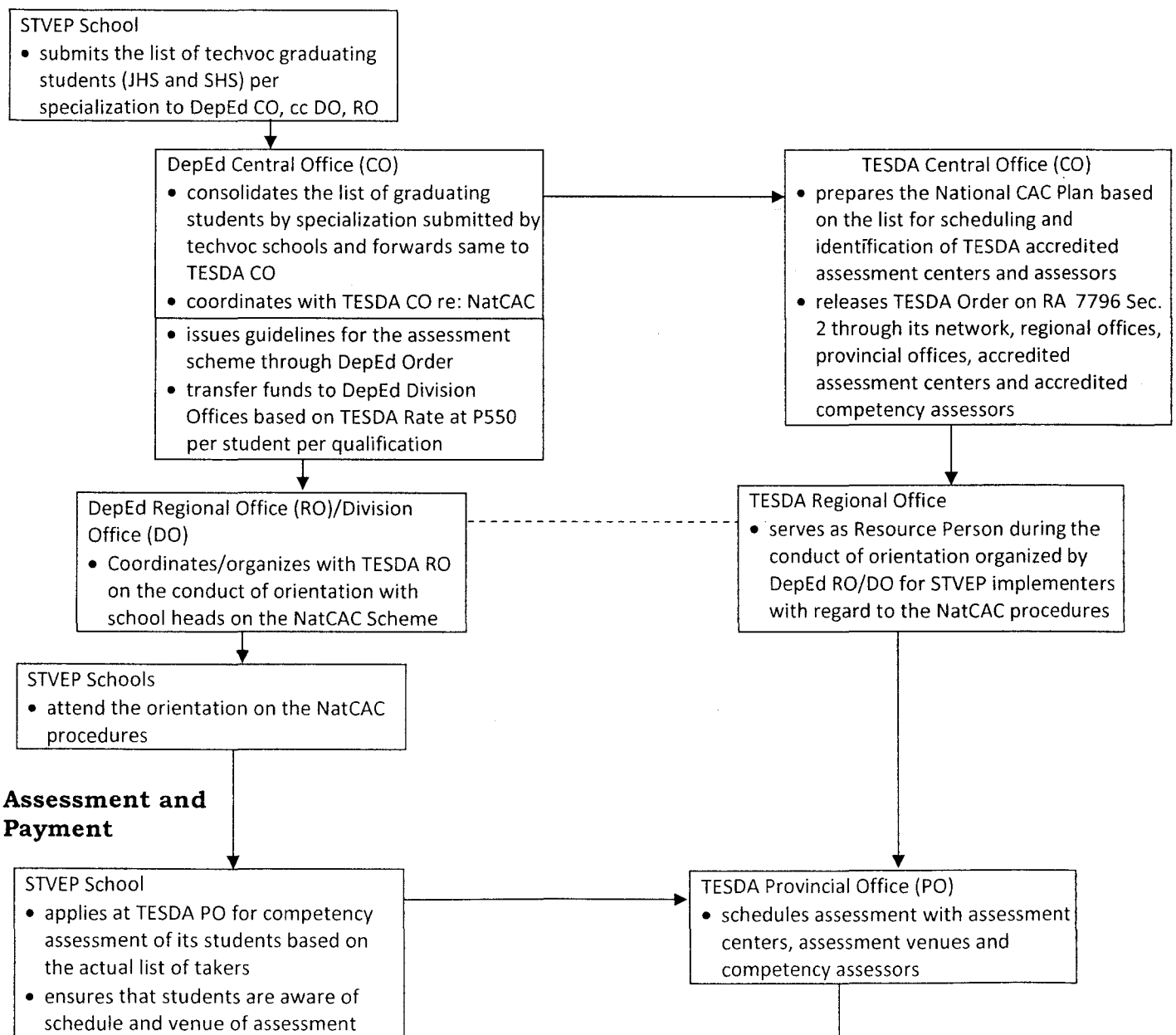
To ensure the smooth conduct of the competency assessment including the proper disbursement and utilization of funds at the field levels, this flowchart illustrates the procedures from planning and orientation to release of assessment results. The flowchart also serves as guide for those involved in the assessment scheme.

**FLOWCHART OF PROCEDURES**

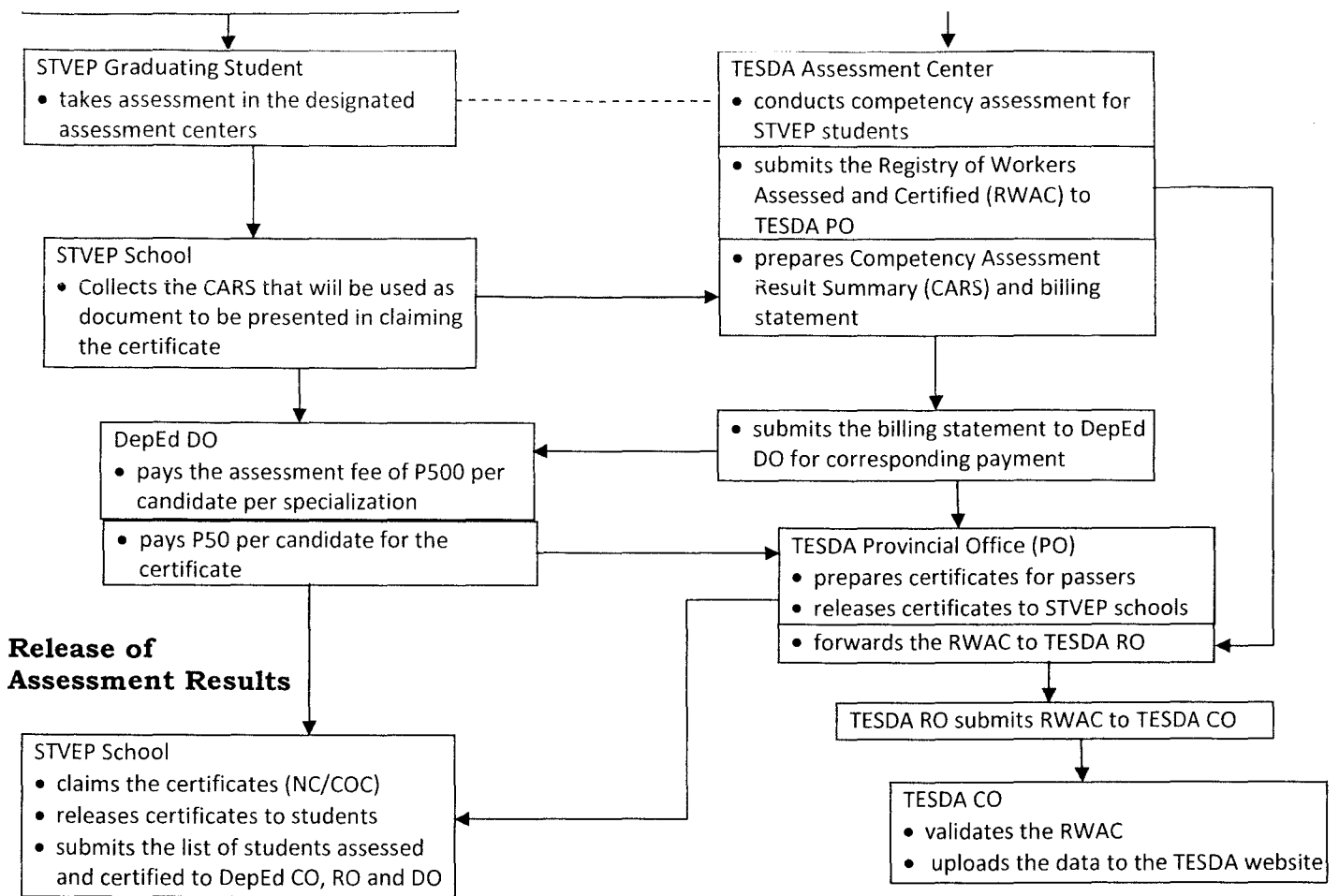
**Department of Education (DepEd)**

**Technical Education and Skills Development Authority (TESDA)**

**Planning and Orientation**



**Assessment and Payment**



**Notes:**

1. Payment of assessment fee shall be based on the actual number of students specified in the billing statement provided by the assessment center.
2. DepEd CO, RO and DO are responsible to monitor the conduct of competency assessment including the liquidation of the assessment subsidy.
3. Transportation and other incidental expenses with regard to the assessment shall be shouldered by the students themselves or can be sourced out from school's local funds.
4. The concerned DepEd division offices shall submit their liquidation reports to DepEd CO, reflecting specific expenditures, with the COA certification, one month after the conduct of the assessment.

(Enclosure No. 2 to DepEd Order No. 8, s. 2014)

Department of Education  
Technical-Vocational Unit, BSE  
2014 Competency Assessment Subsidy

**LIST OF BENEFICIARY SCHOOLS BY DIVISION**

REGIONS	DIVISIONS	ID	SCHOOL NAME	NUMBER OF STUDENTS TO BE ASSESSED	AMOUNT TO BE DOWNLOADED
<b>I</b>	<b>Total by Region:</b>			<b>3,012</b>	<b>1,656,600.00</b>
1	Ilocos Norte	300006	Burgos Agro-Industrial School	113	62,150.00
		300018	Ilocos Norte Agricultural College	265	145,750.00
			<b>sub-total:</b>	<b>378</b>	<b>207,900.00</b>
2	La Union	300135	San Gabriel Vocational High School	137	75,350.00
			<b>sub-total:</b>	<b>137</b>	<b>75,350.00</b>
3	Laoag City	300373	Ilocos Norte College of Arts & Trades	561	308,550.00
		300375	Ilocos Norte Regional School of Fisheries	94	51,700.00
			<b>sub-total:</b>	<b>655</b>	<b>360,250.00</b>
4	Pangasinan I, Lingayen	300232	Binmaley SOF (Pangasinan COF)	279	153,450.00
		300175	Bolinao SOF	174	95,700.00
		300234	Pangasinan SAT	221	121,550.00
			<b>sub-total:</b>	<b>674</b>	<b>370,700.00</b>
5	Pangasinan II, Binalonan	300309	Eastern Pangasinan Agricultural College	318	174,900.00
		300322	Luciano Millan National HS	178	97,900.00
			<b>sub-total:</b>	<b>496</b>	<b>272,800.00</b>
6	San Carlos City	300388	Speaker Eugenio Perez Nat'l. Agr'l. Sch.	672	369,600.00
			<b>sub-total:</b>	<b>672</b>	<b>369,600.00</b>
<b>II</b>	<b>Total by Region:</b>			<b>5,207</b>	<b>2,863,850.00</b>
7	Batanes	300414	Itbayat National Agricultural HS	83	45,650.00
		300417	Sabtang National School of Fisheries	33	18,150.00
			<b>sub-total:</b>	<b>116</b>	<b>63,800.00</b>
8	Cagayan	300418	Abulug NRVHS	94	51,700.00
		300419	Abulug SOF	37	20,350.00
		300421	Alcala Rural School	33	18,150.00
		300424	Allacapan VHS	250	137,500.00
		300428	Aparri SAT	275	151,250.00
		300429	Baggao NAS	231	127,050.00
		300437	Bukig National Agr'l. and Tech. School	191	105,050.00
		300450	Claveria RVS	107	58,850.00
		300451	Claveria SAT	206	113,300.00
		300458	Enrile Vocational High School	215	118,250.00
		300460	Felipe Tuzon Agr'l. School	35	19,250.00
		300462	Gattaran NTS	246	135,300.00
		300466	Itawes Nat'l. Agr'l. & Tech'l. School	150	82,500.00
		300479	Pamplona National School of Fisheries	68	37,400.00
		300486	Sanchez Mira SAT	187	102,850.00
		300487	Solana Fresh Water Fishery School	134	73,700.00
		300488	Sta. Ana Fishery National High School	192	105,600.00
300492	Tuao Voc'l. and Tech'l. School	129	70,950.00		
300497	Western Cagayan SAT	179	98,450.00		
300459	Western Enrile Vocational High School	73	40,150.00		
			<b>sub-total:</b>	<b>3,032</b>	<b>1,667,600.00</b>
9	City of Ilagan	306105	ISAT-Main	229	125,950.00
		300583	San Antonio Nat'l. Agro-Ind'l. & Voc'l. HS	124	68,200.00
			<b>sub-total:</b>	<b>353</b>	<b>194,150.00</b>
10	Isabela	300499	Alicia Vocational School	88	48,400.00
		300537	Gamu Rural School-Main	185	101,750.00
		300554	Isabela SF	161	88,550.00
		300555	Jones Rural School - Main	292	160,600.00
		300575	Reina Mercedes Vocational and Industrial School	254	139,700.00

	REGIONS	DIVISIONS	ID	SCHOOL NAME	NUMBER OF STUDENTS TO BE ASSESSED	AMOUNT TO BE DOWNLOADED	
			300590	San Guillermo Voc'l & Ind'l High Sch.	80	44,000.00	
			300596	San Mateo Voc'l. & Industrial High School-Main	223	122,650.00	
			300601	St. Paul Voc'l. & Ind'l. HS-Main	173	95,150.00	
				<b>sub-total:</b>	<b>1,456</b>	<b>800,800.00</b>	
	11	Nueva Vizcaya	300631	Kasibu Nat'l. Agr'l. School	121	66,550.00	
				<b>sub-total:</b>	<b>121</b>	<b>66,550.00</b>	
	12	Quirino	300656	Cabarroguis NSAT	129	70,950.00	
				<b>sub-total:</b>	<b>129</b>	<b>70,950.00</b>	
<b>III</b>					<b>Total by Region:</b>	<b>6,657</b>	<b>3,661,350.00</b>
	13	Angeles City	301038	Angeles City Nat'l. Trade School	559	307,450.00	
				<b>sub-total:</b>	<b>559</b>	<b>307,450.00</b>	
	14	Aurora	300691	Maria Aurora NHS	104	57,200.00	
				<b>sub-total:</b>	<b>104</b>	<b>57,200.00</b>	
	15	Bataan	300703	Bataan School of Fisheries	259	142,450.00	
				<b>sub-total:</b>	<b>259</b>	<b>142,450.00</b>	
	16	Bulacan	300740	Assemblywoman Felicita G. Bernardino Memorial	227	124,850.00	
			300721	Balagtas National Agricultural HS	532	292,600.00	
			300739	F. F. Halili Nat'l. Agr'l. School	410	225,500.00	
			300742	Guiguinto Nat'l Voc'l. High School	368	202,400.00	
			300764	Obando School of Fisheries	42	23,100.00	
			300773	San Rafael Nat'l Trade School	149	81,950.00	
				<b>sub-total:</b>	<b>1,728</b>	<b>950,400.00</b>	
	17	Malolos City	300750	Malolos Marine Fishery School & Laboratory	173	95,150.00	
				<b>sub-total:</b>	<b>173</b>	<b>95,150.00</b>	
	18	Nueva Ecija	300805	Gabalton Voc'l. Agric. HS	118	64,900.00	
			306812	Ricardo Dizon Canlas Agr'l. HS (Former Jorge M.	77	42,350.00	
			300857	Sto. Domingo NTS	370	203,500.00	
				<b>sub-total:</b>	<b>565</b>	<b>310,750.00</b>	
	19	Pampanga	306903	Bro. Andrew Gonzales Tech.HS	124	68,200.00	
			300890	Floridablanca Nat'l. Agr'l. School	184	101,200.00	
			306901	San Vicente Pilot School for Philippine Craftsmen	247	135,850.00	
				<b>sub-total:</b>	<b>555</b>	<b>305,250.00</b>	
	20	San Jose del Monte City	301061	San Jose del Monte Nat'l. Trade School	513	282,150.00	
				<b>sub-total:</b>	<b>513</b>	<b>282,150.00</b>	
	21	Tarlac	300951	Benigno S. Aquino NHS	979	538,450.00	
			300958	Camiling School of Home Industries	127	69,850.00	
			300994	Capas High School	619	340,450.00	
			300998	Eduardo Cojuangco National Vocational High Sch	184	101,200.00	
			300967	La Paz NHS	204	112,200.00	
				<b>sub-total:</b>	<b>2,113</b>	<b>1,162,150.00</b>	
	22	Zambales	301011	Candelaria School of Fisheries	88	48,400.00	
				<b>sub-total:</b>	<b>88</b>	<b>48,400.00</b>	
<b>IV-A</b>					<b>Total by Region:</b>	<b>6,559</b>	<b>3,607,450.00</b>
	23	Batangas	301079	Bauan Mun. Agric'l & Voc. HS	143	78,650.00	
			301080	Bauan Technical HS	538	295,900.00	
			301122	Malvar National High School	283	155,650.00	
				<b>sub-total:</b>	<b>964</b>	<b>530,200.00</b>	
	24	Calamba City	301514	Calamba Bayside National High School	379	208,450.00	
				<b>sub-total:</b>	<b>379</b>	<b>208,450.00</b>	
	25	Cavite	301167	Amaya Sch. of Home Industries	844	464,200.00	
			301192	Gen. Mariano Alvarez Tech. HS	1,205	662,750.00	
			301219	Tanza NTS	682	375,100.00	
				<b>sub-total:</b>	<b>2,731</b>	<b>1,502,050.00</b>	
	26	Laguna	307907	San Pedro Relocation Center National High School	1,060	583,000.00	
			301273	Sinloan NHS	395	217,250.00	
				<b>sub-total:</b>	<b>1,455</b>	<b>800,250.00</b>	
	27	Quezon	301295	Bondoc Peninsula Agri. HS	250	137,500.00	
			301399	Godofredo M. Tan Mem. SAT (Formerly San Narc	161	88,550.00	
			301340	Lamon Bay SOF - Main Gumaca	75	41,250.00	
			301350	Manuel S. Enverga Memorial School of Arts and T	225	123,750.00	

	REGIONS	DIVISIONS	ID	SCHOOL NAME	NUMBER OF STUDENTS TO BE ASSESSED	AMOUNT TO BE DOWNLOADED	
				<b>sub-total:</b>	<b>711</b>	<b>391,050.00</b>	
	28	Tanauan City	301154	Tanauan School of Fisheries	319	175,450.00	
				<b>sub-total:</b>	<b>319</b>	<b>175,450.00</b>	
<b>IV-B</b>					<b>Total by Region:</b>	<b>1,326</b>	<b>729,300.00</b>
	29	Calapan City	301797	Community Vocational High School	142	78,100.00	
				<b>sub-total:</b>	<b>142</b>	<b>78,100.00</b>	
	30	Occidental Mindoro	301583	Looc National School Of Fisheries	73	40,150.00	
			301586	Lubang Vocational High School	96	52,800.00	
			308901	San Jose National Agricultural and Industrial High School	201	110,550.00	
				<b>sub-total:</b>	<b>370</b>	<b>203,500.00</b>	
	31	Oriental Mindoro	301639	Marcelo I. Cabrera Vocational High School	141	77,550.00	
				<b>sub-total:</b>	<b>141</b>	<b>77,550.00</b>	
	32	Palawan	301684	Coron SOF	460	253,000.00	
			301705	Magara School for Philippine Craftsmen	85	46,750.00	
				<b>sub-total:</b>	<b>545</b>	<b>299,750.00</b>	
	33	Romblon	301772	San Jose Agricultural HS	128	70,400.00	
				<b>sub-total:</b>	<b>128</b>	<b>70,400.00</b>	
<b>V</b>					<b>Total by Region:</b>	<b>4,041</b>	<b>2,222,550.00</b>
	34	Albay	301833	Libon Agro-Industrial HS	321	176,550.00	
			301880	Tiwi Agro-Ind'L Sch.	279	153,450.00	
				<b>sub-total:</b>	<b>600</b>	<b>330,000.00</b>	
	35	Camarines Norte	301919	Froilan Lopez HS ( V)	84	46,200.00	
			301905	Mercedes HS	84	46,200.00	
				<b>sub-total:</b>	<b>168</b>	<b>92,400.00</b>	
	36	Camarines Sur	301942	Barcelonita Fisheries School	90	49,500.00	
			301943	Bikal Fisheries School	102	56,100.00	
			309702	Juan F. Trivino MHS (formerly: Pasacao Sch. of Fisheries)	223	122,650.00	
			302015	Partido Agro-Industrial NHS	72	39,600.00	
			302020	Ragay Nat'l Agr'l & Fisheries School (RNAFS)	113	62,150.00	
				<b>sub-total:</b>	<b>600</b>	<b>330,000.00</b>	
	37	Catanduanes	302082	Caramoran School of Fisheries	90	49,500.00	
			302094	Pandan SAT	355	195,250.00	
			302096	San Andres VS	364	200,200.00	
				<b>sub-total:</b>	<b>809</b>	<b>444,950.00</b>	
	38	Iriga City	302251	Rinconada National Technical Vocational School	300	165,000.00	
				<b>sub-total:</b>	<b>300</b>	<b>165,000.00</b>	
	39	Masbate	302147	Masbate School of Fisheries	202	111,100.00	
			309904	Palanas National Agriculture High School	84	46,200.00	
			302126	Tito R. Espinosa Mem. Nat'l Agric'l. HS	88	48,400.00	
				<b>sub-total:</b>	<b>374</b>	<b>205,700.00</b>	
	40	Naga City	302264	Camarines Sur National High School	495	272,250.00	
				<b>sub-total:</b>	<b>495</b>	<b>272,250.00</b>	
	41	Sorsogon	302197	Casiguran Technical Vocational School	408	224,400.00	
			302207	Donsol Vocational HS	120	66,000.00	
			302220	Magallanes National Vocational HS	167	91,850.00	
				<b>sub-total:</b>	<b>695</b>	<b>382,250.00</b>	
<b>VI</b>					<b>Total by Region:</b>	<b>5,260</b>	<b>2,893,000.00</b>
	42	Aklan	302324	Aklan NHS for Arts & Trades	415	228,250.00	
			302286	Altavas National School	263	144,650.00	
			302297	Buruanga Vocational School	191	105,050.00	
			302310	Libacao National Forestry Vocational High School	101	55,550.00	
			302319	Malinao Sch. For Phil. Craftsmen	100	55,000.00	
			302327	Numancia National Sch. Of Fisheries	124	68,200.00	
				<b>sub-total:</b>	<b>1,194</b>	<b>656,700.00</b>	
	43	Antique	302342	Antique VS	400	220,000.00	
			310704	Gen. Leandro Fullon NHS	137	75,350.00	
			302363	Libertad NVS	95	52,250.00	
			302367	Northern Antique VS	311	171,050.00	
				<b>sub-total:</b>	<b>943</b>	<b>518,650.00</b>	
	44	Capiz	310806	Dumalag Central NHS	201	110,550.00	

REGIONS	DIVISIONS	ID	SCHOOL NAME	NUMBER OF STUDENTS TO BE ASSESSED	AMOUNT TO BE DOWNLOADED
			<b>sub-total:</b>	<b>201</b>	<b>110,550.00</b>
45	Iloilo	302473	Cabatuan NCHS	527	289,850.00
		302490	Dingle NHS	137	75,350.00
		302497	Duenas GCHS	225	123,750.00
		302531	Miagao NHS	367	201,850.00
		302566	San Joaquin School of Fisheries	137	75,350.00
		302573	Sta. Barbara NCHS	464	255,200.00
			<b>sub-total:</b>	<b>1,857</b>	<b>1,021,350.00</b>
46	Negros Occidental	302652	Inocencio V. Ferrer SOF (TASOF) (under the Reg'l	114	62,700.00
		302668	Negros Occ. NAISHI ( under the Reg'l Office)	167	91,850.00
			<b>sub-total:</b>	<b>281</b>	<b>154,550.00</b>
47	Roxas City	302757	Cong. Ramon A. Arnaldo HS	170	93,500.00
		311702	Roxas City School for Philippine Craftsmen	37	20,350.00
			<b>sub-total:</b>	<b>207</b>	<b>113,850.00</b>
48	Silay City	302780	Doña Montserrat Lopez MHS	577	317,350.00
			<b>sub-total:</b>	<b>577</b>	<b>317,350.00</b>
<b>VII</b>			<b>Total by Region:</b>	<b>2,884</b>	<b>1,586,200.00</b>
49	Bohol	302809	Alicia Technical-Voc'l HS	195	107,250.00
		302836	Clarín National School of Fisheries	89	48,950.00
		302824	Mayor A. R. Tuazon Nat'l Sch. of Fisheries	64	35,200.00
		302899	San Pascual National Agr'l HS	86	47,300.00
			<b>sub-total:</b>	<b>434</b>	<b>238,700.00</b>
50	Cebu	302940	Bitoon NVHS	182	100,100.00
		302988	Consolacion NHS - Day Class	156	85,800.00
			<b>sub-total:</b>	<b>338</b>	<b>185,900.00</b>
51	Cebu City	303128	Abellana NHS (Day & Night)	569	312,950.00
			<b>sub-total:</b>	<b>569</b>	<b>312,950.00</b>
52	City of Naga, Cebu	303065	Naga NHS	104	57,200.00
			<b>sub-total:</b>	<b>104</b>	<b>57,200.00</b>
53	Guihulngan City	303230	Guihulngan National Agricultural School	44	24,200.00
			<b>sub-total:</b>	<b>44</b>	<b>24,200.00</b>
54	Lapu-Lapu City	303180	Marigondon NHS	203	111,650.00
			<b>sub-total:</b>	<b>203</b>	<b>111,650.00</b>
55	Mandaue City	303199	Mandaue City Comprehensive NHS	606	333,300.00
		303202	Subangdaku Tech-Voc HS (Mandaue City CNHS	56	30,800.00
			<b>sub-total:</b>	<b>662</b>	<b>364,100.00</b>
56	Siquijor	303306	DepED-Lazi National Agricultural School	151	83,050.00
			<b>sub-total:</b>	<b>151</b>	<b>83,050.00</b>
57	Talisay City	302971	Cansojong NHS	218	119,900.00
			<b>sub-total:</b>	<b>218</b>	<b>119,900.00</b>
58	Toledo City	303316	Toledo National Vocational HS	161	88,550.00
			<b>sub-total:</b>	<b>161</b>	<b>88,550.00</b>
<b>VIII</b>			<b>Total by Region:</b>	<b>9,497</b>	<b>5,223,350.00</b>
59	Biliran	303320	Biliran NAHS	299	164,450.00
		303322	Cabucgayan NSAT	185	101,750.00
		303324	Culaba NVS	122	67,100.00
		303329	Maripipi NVS	100	55,000.00
		303331	Naval School of Fisheries	216	118,800.00
			<b>sub-total:</b>	<b>922</b>	<b>507,100.00</b>
60	Calbayog City	303649	R. Lentejas Mem. School Of Fisheries	249	136,950.00
			<b>sub-total:</b>	<b>249</b>	<b>136,950.00</b>
61	Eastern Samar	303493	Alugan NSCHI	122	67,100.00
		303501	Gen. MacArthur NAS	176	96,800.00
		303502	Giporlos NTS	164	90,200.00
		303512	Lawaan Nat'L. Sch. Of Crafts/Hi	195	107,250.00
		303516	Matarinao SOF	63	34,650.00
		313507	Nena NHS (Nena SAT)	101	55,550.00
		313506	Oras National Agro-Industrial School	69	37,950.00
		313509	Salcedo Vocational HS	128	70,400.00
		303523	Samar Natl Pilot Opp. Sch. Of Agri.	113	62,150.00



	REGIONS	DIVISIONS	ID	SCHOOL NAME	NUMBER OF STUDENTS TO BE ASSESSED	AMOUNT TO BE DOWNLOADED	
			313502	Southern Samar NCHS (Balangiga NHS)	221	121,550.00	
				<b>sub-total:</b>	<b>1,352</b>	<b>743,600.00</b>	
	62	Leyte	303347	Bato SOF	286	157,300.00	
			303358	Calubian NHS (Calubian Nat'l. Voc'l. School)	354	194,700.00	
			303362	Carigara School of Fisheries	352	193,600.00	
			303368	Dr. Geronimo B. Zaldivar MSOF	198	108,900.00	
			303374	Hilongos NVS	439	241,450.00	
			303387	Leyte Agro-Ind'L Sch.	167	91,850.00	
			303403	Marcelino R. Veloso NHS (Marcelino R. Veloso NH)	142	78,100.00	
			303408	Merida VS	211	116,050.00	
			303388	Tanauan Sch. Of Craftsmanship & Home Industr	280	154,000.00	
				<b>sub-total:</b>	<b>2,429</b>	<b>1,335,950.00</b>	
	63	Maasin City	303467	Maasin Vocational High School	56	30,800.00	
				<b>sub-total:</b>	<b>56</b>	<b>30,800.00</b>	
	64	Northern Samar	303531	Allen NHS	469	257,950.00	
			303561	Basilio B. Chan Mem. Agricultural and Industrial	264	145,200.00	
			303535	Bobon School for Philippine Craftsmen	179	98,450.00	
			303540	Capul Agro-Industrial School	206	113,300.00	
			303544	Catubig Valley NHS	314	172,700.00	
			303548	Eladio T. Balite Memorial School of Fisheries	188	103,400.00	
			303551	Gala Vocational School	139	76,450.00	
			303556	Laoang National Technical High School	229	125,950.00	
			303559	Lorenzo S. Menzon AIS	116	63,800.00	
			303564	Mapanas Agro-Industrial High School	144	79,200.00	
			303566	Mondragon Agro-Ind'L HS	173	95,150.00	
			303575	San Antonio Agricultural & Vocational Sch.	105	57,750.00	
			303577	San Isidro Agro-Industrial High School	184	101,200.00	
			303580	San Jose Technical HS	179	98,450.00	
			303581	San Roque-Pambujan Vocational High Sch.	72	39,600.00	
			303583	Silvino Lubos Vocational High School	81	44,550.00	
			303584	Sumoroy Agro-Industrial School	370	203,500.00	
				<b>sub-total:</b>	<b>3,412</b>	<b>1,876,600.00</b>	
	65	Samar (Western Samar)	303599	Clarencio Calagos Mem SOF	202	111,100.00	
			303640	Quintin Quijano Sr. Agricultural School	167	91,850.00	
			303637	Valeriano C. Yancha Mem. Agr'l. Sch.	142	78,100.00	
				<b>sub-total:</b>	<b>511</b>	<b>281,050.00</b>	
	66	Southern Leyte	303444	Anahawan National Vocational High School	39	21,450.00	
			313403	Bontoc National High School	109	59,950.00	
			303477	Pintuyan National Vocational High School	102	56,100.00	
			303486	Silago NVHS	102	56,100.00	
			303492	Villa Jacinta NVHS	70	38,500.00	
				<b>sub-total:</b>	<b>422</b>	<b>232,100.00</b>	
	67	Tacloban City	303669	Tacloban National Agricultural School	144	79,200.00	
				<b>sub-total:</b>	<b>144</b>	<b>79,200.00</b>	
	<b>IX</b>				<b>Total by Region:</b>	<b>1,431</b>	<b>787,050.00</b>
	68	Dipolog City	303885	Alberto Q. Ubay Mem. Agro-Tech'l. Sci. HS	92	50,600.00	
			303890	Pamansalan Eco. Tech. HS	35	19,250.00	
				<b>sub-total:</b>	<b>127</b>	<b>69,850.00</b>	
	69	Pagadian City	303913	Zamboanga del Sur SAT	247	135,850.00	
				<b>sub-total:</b>	<b>247</b>	<b>135,850.00</b>	
	70	Zamboanga del Norte	303703	Kipit Agro-Fishery NHS	126	69,300.00	
			303738	Sindangan National Agricultural School	276	151,800.00	
				<b>sub-total:</b>	<b>402</b>	<b>221,100.00</b>	
	71	Zamboanga del Sur	303797	Molave Vocational Technical School	506	278,300.00	
			303808	Rebokon AVHS	119	65,450.00	
			303818	Subanen Agricultural NHS	30	16,500.00	
				<b>sub-total:</b>	<b>655</b>	<b>360,250.00</b>	
	<b>X</b>				<b>Total by Region:</b>	<b>1,647</b>	<b>905,850.00</b>
	72	Bukidnon	303951	Bukidnon NSHI	434	238,700.00	
				<b>sub-total:</b>	<b>434</b>	<b>238,700.00</b>	

	REGIONS	DIVISIONS	ID	SCHOOL NAME	NUMBER OF STUDENTS TO BE ASSESSED	AMOUNT TO BE DOWNLOADED	
	73	Iligan City	304140	Bunawan Agri. HS	28	15,400.00	
			304150	Iligan City NSOF	91	50,050.00	
			304155	Rogongon Agricultural High School	31	17,050.00	
				<b>sub-total:</b>	<b>150</b>	<b>82,500.00</b>	
	74	Misamis Occidental	304024	Aloran Trade HS	258	141,900.00	
			304025	Baliangao SOF	122	67,100.00	
				<b>sub-total:</b>	<b>380</b>	<b>209,000.00</b>	
	75	Misamis Oriental	304077	Kinoguitan Nat. Agr'l. HS	34	18,700.00	
			304094	Opol NSTS	405	222,750.00	
				<b>sub-total:</b>	<b>439</b>	<b>241,450.00</b>	
	76	Ozamis City	304168	Ozamiz City School of Arts and Trades	244	134,200.00	
				<b>sub-total:</b>	<b>244</b>	<b>134,200.00</b>	
<b>XI</b>					<b>Total by Region:</b>	<b>2,590</b>	<b>1,424,500.00</b>
	77	Davao City	304343	Baguio National School of Arts and Trades	180	99,000.00	
			304344	Elias P. Dacudao Gumalang School of Home Indu	50	27,500.00	
			304342	Ma. Cristina P. Belcar Agricultural High School	44	24,200.00	
			304381	Marilog HS Of Agriculture	18	9,900.00	
				<b>sub-total:</b>	<b>292</b>	<b>160,600.00</b>	
	78	Davao del Norte	304217	Asuncion NHS	275	151,250.00	
			304222	Carmen NHS	75	41,250.00	
				<b>sub-total:</b>	<b>350</b>	<b>192,500.00</b>	
	79	Davao del Sur	304270	Davao Del Sur SOF	232	127,600.00	
			304298	Tacul Agrc'L VHS (Tacul NHS)	105	57,750.00	
				<b>sub-total:</b>	<b>337</b>	<b>185,350.00</b>	
	80	Davao Oriental	304309	Cateel Nat'l. Agri. HS	62	34,100.00	
			304311	Cateel Voc.HS	234	128,700.00	
			304315	E. Moralizon NVHS	150	82,500.00	
				<b>sub-total:</b>	<b>446</b>	<b>245,300.00</b>	
	81	Digos City	304400	Digos City NHS (Davao Del Sur NHS)	136	74,800.00	
				<b>sub-total:</b>	<b>136</b>	<b>74,800.00</b>	
	82	Mati City	304320	Bagumbayan Agro-Industrial HS	62	34,100.00	
			304319	Lupon Vocational HS	373	205,150.00	
			304323	Macangao Agri. VHS	53	29,150.00	
			304326	Mati School of Arts and Trade	152	83,600.00	
			304336	Sigaboy Agricultural Vocational HS	22	12,100.00	
			304338	Taguibo Agricultural Vocational High School	41	22,550.00	
				<b>sub-total:</b>	<b>703</b>	<b>386,650.00</b>	
	83	Tagum City	304261	Tagum National Trade School	326	179,300.00	
				<b>sub-total:</b>	<b>326</b>	<b>179,300.00</b>	
<b>XII</b>					<b>Total by Region:</b>	<b>1,843</b>	<b>1,013,650.00</b>
	84	Cotabato City	304628	Canizares NHS	177	97,350.00	
				<b>sub-total:</b>	<b>177</b>	<b>97,350.00</b>	
	85	General Santos City	304639	Bula National School of Fisheries	259	142,450.00	
			304655	GSC Nat'l. Sec. Sch. Of Arts & Trades	444	244,200.00	
				<b>sub-total:</b>	<b>703</b>	<b>386,650.00</b>	
	86	North Cotabato	304469	Malasila National Vocational and Technological H	66	36,300.00	
				<b>sub-total:</b>	<b>66</b>	<b>36,300.00</b>	
	87	Sarangani	304524	Glan School of Arts and Trades	310	170,500.00	
			304529	Kling National High School	173	95,150.00	
			304534	Malalag NHS	276	151,800.00	
				<b>sub-total:</b>	<b>759</b>	<b>417,450.00</b>	
	88	South Cotabato	304569	Sto. Niño NSAT	29	15,950.00	
			304573	Tantangan NTHS	109	59,950.00	
				<b>sub-total:</b>	<b>138</b>	<b>75,900.00</b>	
<b>CARAGA</b>					<b>Total by Region:</b>	<b>2,027</b>	<b>1,114,850.00</b>
	89	Agusan del Norte	304696	Nasipit National Vocational School	215	118,250.00	
				<b>sub-total:</b>	<b>215</b>	<b>118,250.00</b>	
	90	Agusan del Sur	304730	Patin-ay HS	102	56,100.00	
			304740	Sibagat National High School of Home Industries	160	88,000.00	
				<b>sub-total:</b>	<b>262</b>	<b>144,100.00</b>	

	REGIONS	DIVISIONS	ID	SCHOOL NAME	NUMBER OF STUDENTS TO BE ASSESSED	AMOUNT TO BE DOWNLOADED	
	91	Bislig City	304917	Tabon M. Estrella National High School	353	194,150.00	
				<b>sub-total:</b>	<b>353</b>	<b>194,150.00</b>	
	92	Butuan City	304757	Agusan Pequeno NHS	167	91,850.00	
			304762	Butuan City Sch. of Arts & Trades	302	166,100.00	
				<b>sub-total:</b>	<b>469</b>	<b>257,950.00</b>	
	93	Dinagat Island	304822	Dinagat School of Fisheries	91	50,050.00	
				<b>sub-total:</b>	<b>91</b>	<b>50,050.00</b>	
	94	Surigao del Norte	304813	Bacuag Nat'L Agro-Indust'L Sch.	83	45,650.00	
			304826	Gigaquit Nat'l. Sch. of Home Industries	167	91,850.00	
				<b>sub-total:</b>	<b>250</b>	<b>137,500.00</b>	
	95	Surigao del Sur	304861	Barobo NHS	209	114,950.00	
			304875	Carmen Nat'l. Agr'l. HS	75	41,250.00	
			304915	St. Christine NHS	103	56,650.00	
				<b>sub-total:</b>	<b>387</b>	<b>212,850.00</b>	
<b>CAR</b>					<b>Total by Region:</b>	<b>1,091</b>	<b>600,050.00</b>
	96	Abra	305090	Mataragan NAS	51	28,050.00	
			305093	Pilar Rural High School	55	30,250.00	
				<b>sub-total:</b>	<b>106</b>	<b>58,300.00</b>	
	97	Apayao	305106	Apayao Nat'l Ind'l. & Agr'l. HS	102	56,100.00	
			305123	Pudtol NHS	86	47,300.00	
				<b>sub-total:</b>	<b>188</b>	<b>103,400.00</b>	
	98	Benguet	305143	Gov. Bado Dangwa Agro-Industrial School	98	53,900.00	
			305162	Tublay Sch. of Home Industries	197	108,350.00	
				<b>sub-total:</b>	<b>295</b>	<b>162,250.00</b>	
	99	Kalinga	305199	Balbalan Agricultural and Industrial School	113	62,150.00	
			305212	Nambaran Agro-Industrial National High School	28	15,400.00	
			305216	Pinukupuk Vocational School	37	20,350.00	
			305217	Rizal National School of Arts & Trades	105	57,750.00	
			305225	Tanudan Vocational School	39	21,450.00	
				<b>sub-total:</b>	<b>322</b>	<b>177,100.00</b>	
	100	Mt. Province	305230	Bacarri National Trade & Agricultural School	62	34,100.00	
			305242	Eastern Bontoc NAVHS	32	17,600.00	
			305260	Panabungen School of Arts, trades, and Home In	28	15,400.00	
			305267	Tadian School of Arts & Trades	58	31,900.00	
				<b>sub-total:</b>	<b>180</b>	<b>99,000.00</b>	
<b>NCR</b>					<b>Total by Region:</b>	<b>3,097</b>	<b>1,703,350.00</b>
	101	Makati City	305412	Benigno "Ninoy" S. Aquino HS	656	360,800.00	
				<b>sub-total:</b>	<b>656</b>	<b>360,800.00</b>	
	102	Manila	305292	Antonio J. Villegas Vocational High School	153	84,150.00	
			305317	Elpidio Quirino High School	316	173,800.00	
			305319	Eulogio Rodriguez Vocational High School	129	70,950.00	
				<b>sub-total:</b>	<b>598</b>	<b>328,900.00</b>	
	103	Marikina City	305402	Malanday NHS	223	122,650.00	
				<b>sub-total:</b>	<b>223</b>	<b>122,650.00</b>	
	104	Muntinlupa City	305471	Muntinlupa Business High School - Main	586	322,300.00	
			305470	Pedro E. Diaz High School	352	193,600.00	
				<b>sub-total:</b>	<b>938</b>	<b>515,900.00</b>	
	105	Pasig City	305422	Rizal Exp. Sta. And Pilot SCI (RESPSCI)	345	189,750.00	
				<b>sub-total:</b>	<b>345</b>	<b>189,750.00</b>	
	106	Quezon City	305360	Don Alejandro Roces, Sr. Sci. & Tech. HS	337	185,350.00	
				<b>sub-total:</b>	<b>337</b>	<b>185,350.00</b>	
					<b>GRAND TOTAL:</b>	<b>58,169</b>	<b>31,992,950.00</b>